

KCPE NOVEMBER 2023 PREDICTION MASTER CYCLE 6

5160066

035713655



KENYA NATIONAL PREDICTION TESTS
KCPE



516006

SCIENCE

Time: 1 hour 40 minutes

INSTRUCTIONS TO CANDIDATES (Please read these instructions carefully)

1. You have been given this question booklet and a separate answer sheet. The question booklet contains 50 questions.
2. Do any necessary rough work in this booklet.
3. When you have chosen your answer, mark it on the **ANSWER SHEET**, not in this question booklet.

HOW TO USE THE ANSWER SHEET

4. Use an ordinary pencil only.
5. Make sure that you have written on the answer sheet:
YOUR INDEX NUMBER
YOUR NAME
NAME OF YOUR SCHOOL
6. By drawing a **dark line** inside the correct numbered boxes mark your full Index Number (i.e. School Code Number and the three-figure Candidate's Number) in the grid near the top of the answer sheet.
7. Do not make any marks outside the boxes.
8. Keep the sheet as clean as possible and do not fold it.
9. For each of the questions 1-50 four answers are given. The answers are lettered A, B, C and D. In each case only **ONE** of the four answers is correct. Choose the correct answer.
10. On the answer sheet, show the correct answer by drawing a **dark line** inside the box in which the letter you have chosen is written.

Example

In the Question Booklet.

5. Which one of the following components of blood is involved in clotting after an injury?
A. White blood cells.
B. Red blood cells.
C. Plasma.
D. Platelets.

The correct answer is D.

On the answer sheet:

5. (A) (B) (C) (D) **15.** (A) (B) (C) (D) **25.** (A) (B) (C) (D) **35.** (A) (B) (C) (D) **45.** (A) (B) (C) (D)

In the set of boxes numbered **5**, the box with the letter **D** printed in it is marked.

11. Your **dark line** **MUST** be within the box.
12. For each question **ONLY ONE** box is to be marked in each set of four boxes.



906507

This question paper consists of 8 printed pages.

© Mthani Bora



Contact Mr Machuki 0724333200/0795491185 for Marking Schemes or kenyaeducators.co.ke

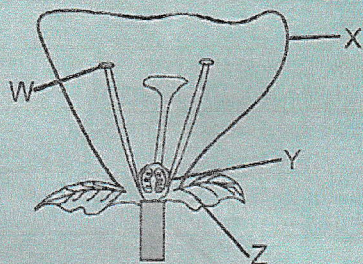
1. The placenta facilitates all the following processes except;
- distribution of heat from the mother to the foetus
 - gaseous exchange
 - transfer of food nutrients from the mother to the foetus
 - removal of waste from the foetus

2. At ten weeks after birth, an infant is given;
- 4th DPT and 2nd polio
 - 2nd DPT and 2nd polio
 - 1st DPT and Measles
 - 2nd DPT and 3rd polio

3. A certain drug has the effects below when abused;
- Dryness of the mouth*
 - Loss of sleep*
 - Loss of appetite*
 - Mulnutrition and poor health
- The drug with the above effects is;
- cocaine
 - bharg
 - khat
 - mandrax

4. A plant with needle-like leaves is also likely to have;
- increased number of stomata
 - flexible stem
 - deep and widespread roots
 - thin cuticle on the leaves

5. The diagram below represents parts of a flower.



Which of the following pairs represents the part which protect the young flower and the part which produces the male sex cells respectively?

- X and Y
- Z and W
- W and Z
- Y and Z

6. A common characteristic between birds and

reptiles is that both;

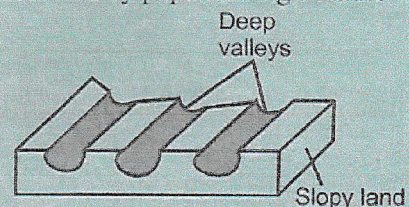
- lay unfertilized eggs
- have constant body temperature
- have scales on their body
- have varying body temperature

7. Which one of the following is the main function of the swim bladder in fish?
- To propel the fish forward
 - To enable the fish change direction when swimming
 - For downward and upward movement by the fish
 - To enable the fish float when not swimming

8. Sandy soil had the highest drainage due to all the following features except;
- large particles
 - shiny particles
 - rough texture
 - large air spaces

9. In an experiment a pupil was dissolving salt in water. Which one of the following activities would not make the salt particles to dissolve faster?
- Stirring the mixture
 - Warming the liquid substance
 - Using a bigger container to dissolve the mixture
 - Crushing the salt particles into powder form

10. The diagram below represents a type of erosion observed by pupils during a nature walk.



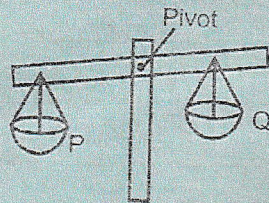
The type of erosion observed would best be controlled by;

- contour farming
- constructing porous dams
- digging terraces
- applying mulches

11. Which one of the following inorganic manures is not a source of Nitrogen to the plants?
- Double superphosphate (DSP)

- requires reduced friction?
- A. Door hinges
 - B. Sole of footballer's boots
 - C. Bicycle tyre
 - D. Handles of a bicycle

25. Equal amounts of substance P and Q were balanced on a beam balance and the effect was as shown below.



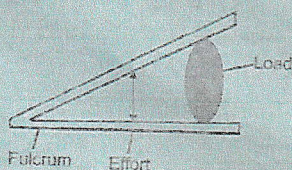
- The substances would be made to balance by:
- A. adding some more of substance P
 - B. reducing the amount of substance Q
 - C. moving substance Q towards the pivot
 - D. reducing the content in substance P

26. Which one of the following parts of the skin allows the sweat to evaporate on the surface?
- A. Sweat glands
 - B. Pores
 - C. Hair follicle
 - D. Sweat duct

27. A certain sexually transmitted infection has the following signs and symptoms:
- i) Pain in the lower abdomen
 - ii) Pain when urinating
 - iii) Discharge of yellowish pus from the genitals
- The disease described is:
- A. chancroid
 - B. syphilis
 - C. gonorrhoea
 - D. genital herpes

28. Which one of the following is not a sign of ill-health in livestock?
- A. Loss of weight
 - B. Retarded growth
 - C. Blood in stool
 - D. Lower yields

29. The illustration below represents a certain lever in use.



- The lever illustrated above is likely to be:
- A. scissors
 - B. bottle opener
 - C. tweezers
 - D. wheel barrow

30. Which one of the following is not an excretory organ?
- A. Anus
 - B. Lungs

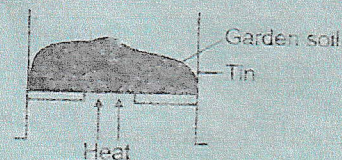
- C. Skin
- D. Kidney

31. The following are signs and symptoms of a certain nutritional deficiency disease:
- i) Reduced growth
 - ii) Swollen feet, hands and stomach
 - iii) Thin brownish hair
 - iv) Sores at the corners of the mouth
- The disease can be prevented by feeding on all the following except:

- A. eggs
- B. fresh vegetables
- C. beans
- D. fish

32. When the left ventricle contracts:
- A. blood leaves the heart through the pulmonary vein
 - B. deoxygenated blood is pumped to all the body parts
 - C. blood leaves the heart through the aorta
 - D. blood flows to the right chambers

33. In an experiment to investigate presence of water in the soil, pupils set up the apparatus as shown below.



- For correct observations, the pupils should:
- A. add some water to the soil
 - B. place a lid on the tin
 - C. increase the amount of heat
 - D. shake the soil during heating

34. Which one of the following is the fourth planet from Venus?
- A. Mars
 - B. Uranus
 - C. Saturn
 - D. Jupiter

35. The diagram below represents a maize plant.

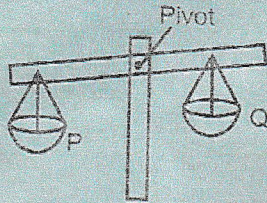


- The part of the thread-like features marked X represents the:
- A. style
 - B. stigma
 - C. anthers
 - D. filament

requires reduced friction?

- A. Door hinges
- B. Sole of footballer's boots
- C. Bicycle tyre
- D. Handles of a bicycle

25. Equal amounts of substance P and Q were balanced on a beam balance and the effect was as shown below.



The substances would be made to balance by:

- A. adding some more of substance P
 - B. reducing the amount of substance Q
 - C. moving substance Q towards the pivot
 - D. reducing the content in substance P
26. Which one of the following parts of the skin allows the sweat to evaporate on the surface?
- A. Sweat glands
 - B. Pores
 - C. Hair follicle
 - D. Sweat duct

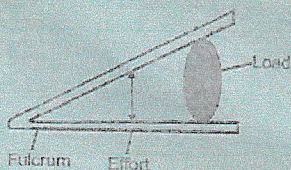
27. A certain sexually transmitted infection has the following signs and symptoms.

- i) Pain in the lower abdomen
- ii) Pain when urinating
- iii) Discharge of yellowish pus from the genitals

The disease described is:

- A. chancroid
 - B. syphilis
 - C. gonorrhoea
 - D. genital herpes
28. Which one of the following is not a sign of ill-health in livestock?
- A. Loss of weight
 - B. Retarded growth
 - C. Blood in stool
 - D. Lower yields

29. The illustration below represents a certain lever in use.



The lever illustrated above is likely to be:

- A. scissors
- B. bottle opener
- C. tweezers
- D. wheel barrow

30. Which one of the following is not an excretory organ?

- A. Anus
- B. Lungs

C. Skin

D. Kidney

31. The following are signs and symptoms of a certain nutritional deficiency disease;

- i) Reduced growth
- ii) Swollen feet, hands and stomach
- iii) Thin brownish hair
- iv) Sores at the corners of the mouth

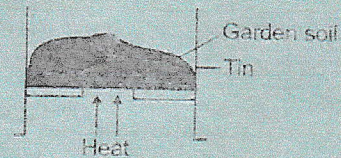
The disease can be prevented by feeding on all the following except:

- A. eggs
- B. fresh vegetables
- C. beans
- D. fish

32. When the left ventricle contracts:

- A. blood leaves the heart through the pulmonary vein
- B. deoxygenated blood is pumped to all the body parts
- C. blood leaves the heart through the oarta
- D. blood flows to the right chambers

33. In an experiment to investigate presence of water in the soil, pupils set up the apparatus as shown below.



For correct observations, the pupils should:

- A. add some water to the soil
- B. place a lid on the tin
- C. increase the amount of heat
- D. shake the soil during heating

34. Which one of the following is the fourth planet from Venus?

- A. Mars
- B. Uranus
- C. Saturn
- D. Jupiter

35. The diagram below represents a maize plant.

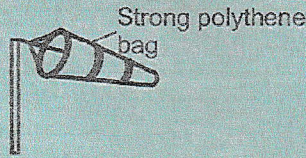


The part of the thread-like features marked X represents the:

- A. style
- B. stigma
- C. anthers
- D. filament

36. Waterborne diseases can best be prevented by;
 A. drinking boiled or treated water
 B. draining stagnant water
 C. wearing protective clothing when handling stagnant water
 D. maintaining cleanliness

37. The diagram below represents a weather instrument constructed by Std 5 pupils.

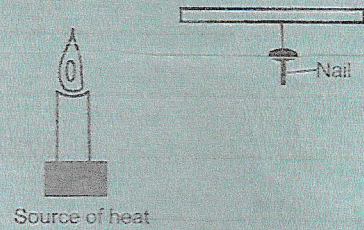


Which one of the following will not make the instrument effective in its functioning?

- A. Painting it with black and white stripes
 B. Fixing narrow end to the side of the pole
 C. Opening it on both ends
 D. Placing it in an open field
38. An iron box has the handle made of plastic or wood mainly to;
 A. provide a firm grip when ironing
 B. allow conduction of electricity
 C. prevent burning one's hand during ironing
 D. reduce the amount of power used when ironing
39. Which one of the following nutrients is needed by plants in small quantities?
 A. Sulphur B. Zinc
 C. Oxygen D. Carbon
40. Which one of the following diseases is communicable but not immunisable?
 A. Malaria B. Tuberculosis
 C. Tetanus D. Whooping cough
41. The illustration below represents a simple food chain.
 Plants → Locusts → Lizards → Hawks
 Which one of the following is likely to happen if all the lizards dies in that environment?
 A. Hawks would increase
 B. Plants would decrease
 C. Locusts would decrease
 D. Hawks would eat plants
42. Which one of the following methods of food preservation makes the germs inactive?
 A. Freezing B. Use of honey
 C. Canning D. Salting
43. A ball of wax floats in water due to its;

- A. shape B. weight
 C. material D. size

44. A nail was suspended near a source of heat as shown below.



The nail felt hot after sometimes because heat was transmitted through;

- A. radiation and conduction
 B. convection
 C. convection and radiation
 D. radiation only
45. During the incubation stage of HIV, infection, the victim is likely to;
 A. test positive and show no signs
 B. test negative and have no signs
 C. test positive and show signs
 D. test positive and look very weak
46. Which one of the following characteristics of matter is common in both water and flour?
 A. Definite shape B. Indefinite shape
 C. Definite size D. indefinite mass
47. Which one of the following is not an example of force?
 A. Gravity B. Magnetism
 C. Friction D. Mass
48. Which one of the following physical changes are correctly grouped?
Girls Boys
 A. Broadening of shoulders Wet dreams
 B. Menstrual flow Breaking of voice
 C. Wet dreams Broadening of hips
 D. Attraction to opposite sex Pimples on the face
49. Cumulus clouds do not;
 A. form at high altitudes
 B. have a flat base
 C. appear dark grey in colour
 D. look like bundles of cotton wool
50. All the following are rotational methods of grazing except;
 A. tethering B. herding
 C. strip-grazing D. paddocking