

SIGNAL SET EXAM-22
KCPE TRIAL FOUR

CLASS OF KCPE NOVEMBER 2023

FOR MARKING SCHEMES:

ORDER ONLINE AT:

www.kenyaeducators.co.ke

OR

CONTACT:

Mr Machuki – 0724333200

KENYA EDUCATORS CONSULTANCY

SIGNAL EXAMS 2022
FOURTH K.C.P.E. SIGNAL
ENGLISH

SIGNAL 004

SECTION A:
LANGUAGE

Time: 1 hour 40 minutes

READ THESE INSTRUCTIONS CAREFULLY

1. You have been given this question booklet and a separate answer sheet. The question booklet contains 50 questions.
2. Do any necessary rough work in this booklet.
3. When you have chosen your answer, mark it on the **ANSWER SHEET**, not in this question booklet.

HOW TO USE THE ANSWER SHEET

4. Use only an ordinary pencil.
5. Make sure that you have written on the answer sheet:
YOUR INDEX NUMBER
YOUR NAME
NAME OF YOUR SCHOOL
6. By drawing a **dark line** inside the correct numbered boxes mark your full Index Number (i.e. School Code Number and the three-figure Candidate's Number) in the grid near the top of the answer sheet.
7. Do not make any marks outside the boxes.
8. Keep your answer sheet as clean as possible and **DO NOT FOLD IT**.
9. For each of the Questions 1 – 50 four answers are given. The answers are lettered A, B, C, D in each case only **ONE** of the four answers is correct. Choose the correct answer.
10. On the answer sheet show the correct answer by drawing a **dark line** inside the box in which the letter you have chosen is written.

Example

For question 25, choose the correct alternative to replace the underlined word

25. The grenade went off and injured several people.

- A. raptured
- B. shot
- C. burst
- D. exploded

The correct answer is **D (exploded)**

5. (A) (B) (C) (D) **15.** (A) (B) (C) (D) **25.** (A) (B) (C) (D) **35.** (A) (B) (C) (D) **45.** (A) (B) (C) (D)

On the answer sheet

In the set of boxes numbered **25**, the box with letter **D** printed in it is marked.

11. Your **dark line** **MUST** be within the box.
12. For each question **ONLY ONE** box is to be marked in each set of four boxes.

© **Signal Publishers Limited 2022**

Website: www.signalpublishers.com. Email: info@signalpublishers.com

 SignalPublishers  @SignalPublishers

Read the passage below. It contains blank spaces numbered 1-15. For each blank space, choose the best alternative from the choices given.

Many people watch television all over the world. In fact, _____ 1 _____ those living in urban areas, they can _____ 2 _____ take twenty-four hours _____ 3 _____ watching television. This is because television watching is not only informative but _____ 4 _____ educational. There are many things people can _____ 5 _____ that they first saw or learnt about as they watched television. For example, one _____ 6 _____ never have travelled out of his country but _____ 7 _____ the television, he is able to effectively make a comparison during a discussion _____ 8 _____ Kenya and the United States of America. Secondly, some football _____ 9 _____ can enumerate to you all the _____ 10 _____ in a specific league or tournament and in some cases, a whole line up of a _____ 11 _____ team, the possible reserves and even the _____ 12 _____ !

Television, _____ 13 _____, can be misused, especially by the youth. Taking _____ 14 _____ long hours watching television has negative effect on both health and academic progress. Likewise, there are programs that are not _____ 15 _____ for children of all ages. Therefore, selective viewing is recommended.

- | | | | |
|-------------------|----------------|----------------|----------------|
| 1. A. for | B. with | C. of | D. like |
| 2. A. often | B. usually | C. hardly | D. always |
| 3. A. before | B. during | C. after | D. then |
| 4. A. even | B. more | C. too | D. also |
| 5. A. state | B. confess | C. decide | D. remember |
| 6. A. must | B. should | C. might | D. could |
| 7. A. through | B. in | C. by | D. with |
| 8. A. among | B. around | C. between | D. within |
| 9. A. fans | B. spectators | C. referees | D. fans |
| 10. A. groups | B. players | C. teams | D. cheerers |
| 11. A. local | B. specific | C. certain | D. common |
| 12. A. coach | B. head | C. goalkeeper | D. striker |
| 13. A. moreover | B. although | C. even | D. however |
| 14. A. moderately | B. excessively | C. selectively | D. necessarily |
| 15. A. allowed | B. interesting | C. suitable | D. attractive |

In questions 16 and 17, choose the alternative that best completes the sentence given.

16. Heri never goes to bed before eight o'clock. _____?
A. does he
B. did he
C. doesn't he
D. didn't he
17. You didn't have to walk in the rain, _____?
A. isn't it
B. didn't you
C. haven't you
D. did you

In questions 18 and 19, choose the alternative which means the same as the underlined words.

18. The suspect was cleared of all the charges levelled against him.
A. informed
B. discharged
C. accused
D. remanded
19. The noise made by the pupils' feet outside the classroom was irritating.
A. swishing
B. clattering
C. pattering
D. rustling

In questions 20 and 21, choose the best alternative that is pronounced in the same way as the underlined word.

20. The cow was given enough water to drink.
A. plough
B. sow
C. low
D. mow
21. The new road has shortened the distance between the two towns.
A. roared
B. root
C. rot
D. rowed

In questions 22 and 23, re-arrange the given sentences in order to form a sensible paragraph.

22. (i) The spectators started cheering almost immediately.
(ii) The referee blew the whistle.
(iii) At the end of the match, neither of the teams had scored a goal.
(iv) All the players took their positions to start the game.
A. (i), (iii), (iv), (ii)
B. (ii), (iv), (i), (iii)
C. (iv), (i), (ii), (iv)
D. (iii), (ii), (ii), (iv)
23. (i) The tests were started soon after admission.
(ii) He realized he needed to have her tested and monitored.
(iii) The doctor looked at the patient keenly.
(iv) He asked the nurse to admit her immediately.
A. (iii), (iv), (ii), (i)
B. (iv), (iii), (i), (ii)
C. (ii), (iv), (i), (iii)
D. (i), (iii), (iv), (ii)

For questions 24 and 25, choose the sentence which means the same as the underlined sentence.

24. If it had not rained heavily, we would have crossed the river.
A. Though it had rained heavily, we crossed the river.
B. We thought we would cross the river if it rained heavily.
C. It had rained heavily so we did not cross the river.
D. It had rained heavily and we still crossed the river.
25. Neither the father nor the mother was pleased with his results.
A. Both his father and mother were pleased with his results.
B. Only the father and not the mother was pleased with his results.
C. Perhaps either of the parents was pleased with his results.
D. None of his parents was pleased with his results.

Read the passage below and then answer questions 26 to 38.

As they grew up, the boys felt some pieces of advice were outdated. They wondered why their parents always insisted that they should be in the house before dusk while according to them, they had no business in the house at that time and who had ever been attacked by wild animals around that time? One day, they got the answer.

It was nearing eight o'clock but the darkness made it look even later. The wind was blowing and the sky was covered with equally dark clouds, a sign that a storm was brewing. To Charo, Subira and Kizito, all that meant nothing to them.

Charo had just passed through their gate when he thought he saw a movement in the darkness. It was a four-legged animal, big enough to cause misery to an adult. It could be worse if it were a carnivore and they were not that rare there. He stopped still, his heart beating as he tried to locate where it had hidden itself. Fear started gripping him as the nearest house was still about seventy metres or so away. That is a distance he could not cover safely if whichever animal it was wanted him for a meal. Then, he heard the movement again. It was behind him but just along the hedge. He turned sharply but saw nothing. He was confused, scared and sweating, expecting to be pounced on from any direction. He started prowling towards the nearest house.

He had not gone far when he heard a sound from behind and it was just like twenty metres or so away from the house. He stopped in surrender to fate. Then he heard the animal speeding off towards the main house at top speed and disappeared almost instantly. The animal, according to him, was blocking his movement towards the house yet he couldn't move backwards too! Likewise, he couldn't tell how many the animals were. For the first time, he knew how a person feels when about to die but was he ready for it?

Then, as if God had been watching him all along, he saw the door of the main house opening. He broke into a loud blood-curdling scream, with full knowledge that it could be the last cry he ever made on earth. The scream was so frightening even to himself that he could not hear what his father and elder brothers were shouting to him about. He just continued at the top of his voice, "They're killing me! They're killing me!!"

The reaction was instant. Armed with spears, clubs and pangas, the males shot out of their houses into the darkness towards the 'dying' boy. They moved fast towards him and soon surrounded him. "Where's the animal?" they asked him almost in a chorus. "It's gone towards the house. It was huge and black," he said in a stammer. The group moved towards where he had pointed and sure enough, they saw it without looking for it: the brown ram! It had moved out of the pen whose door could be seen partially open. "Who had shut the door of the pen?" his elder brother asked. No one responded. "And if I may ask, what were you still doing out in this darkness? What are your ears for?" the father asked. The person who was expected to respond remained mute, laughter from the others is what saved him.

26. The boys could not take in some pieces of advice
- since their way of life had changed
 - as they did not see their importance
 - because it was no longer dangerous
 - unless they were commanded to do so.
27. According to the boys, going home before dusk was
- meant to please their parents
 - to ensure they did not go astray in darkness
 - usual to test how obedient they were
 - ill-advised as they had no role to play there.
28. What do you think made eight o'clock look darker that day?
- The weather condition had changed.
 - The boys were more scared.
 - The paths were deserted.
 - Wild animals were roaming around.
29. A storm meant nothing to the boys since
- they were not farmers
 - they were rarely rained on
 - they felt safe even with the weather change
 - it would not last for long.
30. By saying he thought he saw a movement, Charo meant that
- he was too frightened to be sure
 - he was thinking too fast
 - he stopped thinking for some time
 - he was not certain if he saw it.
31. Charo paused as he tried to locate the animal since he
- did not want to bump into it
 - wanted to outrun it to the house
 - was ready to confront it
 - had suddenly become brave.
32. As he tried to escape from the animal, Charo thought it could be a
- baboon
 - leopard
 - rhino
 - crocodile.
33. When Charo heard the movement again, he
- stopped breathing temporarily from fear
 - was sure he was safe as he was at home already
 - felt like running out through the gate
 - was more preoccupied with his own safety.
34. The closer he moved to the main house, the
- safer he felt
 - more dangerous the animal became
 - more his troubles increased
 - more careful and slower he became.
35. Why did Charo scream loudly when he saw their door opening?
- He was sure he could get help.
 - It was unusual for the door to open at such a time.
 - It was a warning to the family.
 - He wanted to scare the animal away.
36. The males carried various weapons from the home as
- to see who among them was the bravest
 - they were out to defend one of their own
 - a sign to the neighbours of their security
 - to show Charo how dangerous darkness can be.
37. As soon as the family identified the animal, they must have felt
- confused
 - shocked
 - amused
 - relieved.
38. Charo's father's last question suggests that
- it was right for the ram to have frightened Charo
 - the whole family is careless
 - Charo is a disobedient boy
 - Charo needed to use all parts of his body.

Read the passage below and then answer questions 39 to 50.

Mosquitoes are some of the most common and dangerous insects of our times. They are very much feared because a bite from some of them has serious health effects which include death. Interestingly, although they have lived with us for as long as we can't tell, it's likely that you know very little about them. This is because not all of them are treated equally and so is their bite of us.

Aedes mosquitoes are mostly encountered during the day. They are black with distinctive white or silvery markings. They breed in containers such as tyres and tree holes. They lay single eggs on the damp sides of water bodies rather than directly onto water. These mosquitoes are capable of transmitting a range of deadly viruses including dengue, yellow fever and zika.

Unlike Aedes and Culex mosquitoes, Anopheles mosquitoes make only a soft buzzing sound and hence are often referred to as the '**silent killers**'. Of the approximately 460 Anopheles mosquito species, at least 70 have been implicated in malaria transmission. Adult Anopheles mosquitoes are brown or black with dappled wings and are generally most active between dusk and dawn. They also have a very distinctive resting posture, with the abdomen pointing away from a surface at an angle of about 45 degrees as opposed to resting parallel to the surface of the water.

Some mosquitoes do not bite at all. Female Anopheles mosquitoes interact with you when in search of a blood meal. They use proteins in blood to assist with egg production. In her search for essential proteins, the female malaria mosquito bites - she doesn't sting. Male Anopheles mosquitoes are harmless and play a critical role in pollination of plants.

Toxorhynchites mosquitoes, also known as Elephant mosquitoes, do not have biting mouth parts. Their larvae are, however, actively carnivorous and eat other mosquitoes' larvae. In certain conditions, they have been used for biological control. It is also worth noting that some mosquito-look alikes, notably crane flies. These large flies cannot bite but are commonly mistaken for gigantic mosquitoes.

Despite being associated with a wide range of diseases, mosquitoes are not capable of transmitting viruses such as HIV, Ebola or the novel Coronavirus.

It is therefore important to protect yourself from mosquito bites when in an area with a high risk of exposure to mosquito-borne diseases. Consider covering exposed areas of skin with repellants and sleeping under treated mosquito nets.

39. According to the first paragraph, mosquitoes
- not all mosquito bites cause death
 - mosquitoes and other insects are feared
 - any mosquito bite affects your health
 - death is the eventuality of any malaria infection.
40. We can't tell for how long we lived with mosquitoes because
- our ages are not the same
 - the total number of mosquitoes is unknown
 - the effect of mosquitoes on us varies
 - no one knows exactly when mosquitoes came to existence.
41. If you get bitten by a mosquito during the day, it could be
- female anopheles mosquito
 - the Elephant mosquito
 - culex mosquito
 - aedes mosquito.
42. The best way to eradicate aedes mosquitoes is
- spray your room before you go to bed
 - get rid of holes and water bodies
 - sleep under treated mosquito net
 - sleep less during the day.
43. What is the similarity between aedes and culex mosquito?
- They make loud buzzing noise.
 - Both of them infect people with malaria germs.
 - They are encountered during the day.
 - Both of them make low buzzing sound.
44. Anopheles mosquito is referred to as 'silent killer' because
- its bite kills very fast.
 - its victims make no noise after being bitten
 - its buzz is hardly heard
 - it goes silent after biting its victim.
45. You can easily identify an anopheles mosquito by
- the number of eggs it lays
 - its black colour
 - the size of the wings
 - its resting posture.
46. If a female anopheles mosquito does not bite, it would
- easily die of starvation
 - reduce mosquito species
 - affect their population growth
 - other mosquitoes would feed on them.
47. The main difference between the female and male anopheles mosquitoes is that
- only one of them can fly at night
 - one is fatal while the other is safe
 - one aids on pollination while the other rests
 - one flies and bites during the day only.
48. If Elephant mosquitoes were more
- there could be less of other mosquitoes
 - male anopheles mosquitoes could increase in number
 - more people's health could be affected
 - the number of crane flies would reduce.
49. The best way to protect the exposed parts of the body is to
- keep the grass around the house short
 - spray the house every day
 - sleep under treated mosquito net
 - use mosquito repellants.
50. The best title for this passage would be
- Control of dangerous insects.
 - The breeding and increase of mosquitoes.
 - Facts about mosquitoes.
 - Diseases caused by mosquitoes.

NB: For a comprehensive revision in English get yourself a copy of 'SIGNAL K.C.P.E REVISION ENGLISH' from Signal Publishers. AVAILABLE AT BOOKSHOPS COUNTRYWIDE.

SIGNAL EXAMS 2022
FOURTH K.C.P.E SIGNAL
SCIENCE

SIGNAL 004

Time: 1hr 40min

READ THESE INSTRUCTIONS CAREFULLY

1. You have been given this question booklet and a separate answer sheet. The question booklet contains 50 questions.
2. Do any necessary rough work in this booklet.
3. When you have chosen your answer, mark it on the **ANSWER SHEET** not in the question booklet.

HOW TO USE THE ANSWER SHEET

4. Use an ordinary pencil.
5. Make sure that you have written on the answer sheet:

YOUR INDEX NUMBER
YOUR NAME
NAME OF YOUR SCHOOL

6. By drawing a dark line inside the correct numbered boxes mark your full Index Number (i.e. School code Number and the three-figure Candidate's Number) in the grid near the top of the answer sheet.
7. Do not make any marks outside the boxes.
8. Keep your answer sheet as clean as possible and do not fold it.
9. For each of the Questions 1 – 50, four answers are given. The answers are lettered A, B, C, and D. In each case only **ONE** of the four answers is correct. Choose the correct answer.
10. On the answer sheet the correct answer is to be shown by drawing a dark line inside the box in which the letter you have chosen is written.

Example

In the question booklet:

4. Which of the following weeds has pink flowers?
A. Wandering jew
B. Pigweed
C. Mexican marigold
D. Oxalis.

The correct answer is D (Oxalis)

On the answer sheet:

4. (A) (B) (C) (D) 14. (A) (B) (C) (D) 24. (A) (B) (C) (D) 34. (A) (B) (C) (D) 44. (A) (B) (C) (D)

In the set of boxes numbered 4, the box with the letter D is printed in it is marked.

11. Your dark line **MUST** be within the box.
12. For each question **ONLY ONE** box is to be marked in each set of four boxes.

This question paper consists of 8 printed pages.

© Signal Publishers Limited 2022

Website: www.signalpublishers.com. Email: info@signalpublishers.com



SignalPublishers



@SignalPublishers

1. The following are afterbirths **except**
- A. Embryo
 - B. Placenta
 - C. Umbilical cord
 - D. Amniotic sac.

2. Which of the following parts of the digestive system is **correctly** matched with its function?

Part	Function
A. Colon	Absorption of food
B. Ileum	Absorption of water
C. Duodenum	Production of bile juice
D. Stomach	Production of gastric juice

3. Below is a description of a certain type of teeth.

(i) They are twelve in number.

(ii) They are not shed.

(iii) They have cusps.

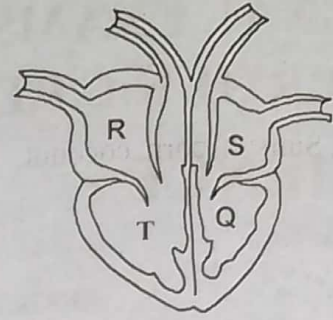
The type of the tooth described above is used in

- A. tearing and holding food
- B. chewing and grinding food
- C. cutting and biting food
- D. crushing and grasping.

4. The process by which an ovum is released after every 28 days from the ovary is called

- A. parturition
- B. menstruation
- C. ovulation
- D. fertilisation.

5. The diagram below represents a mammalian heart.



Wambui inhaled a poisonous gas from a nearby factory. In which chamber of the heart will the poison reach last?

- A. S
- B. T
- C. Q
- D. R

6. Insectivorous plants trap insects and digest them to make

- A. proteins
- B. nitrogen
- C. vitamins
- D. carbohydrates.

7. The **best** method of controlling weeds is by

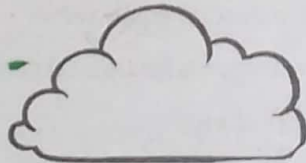
- A. uprooting
- B. digging out
- C. slashing
- D. using chemicals.

8. Which of the following groups of plants consists **only** of fibre crops?
- Coffee, tea, cocoa.
 - Sisal, cotton, flax.
 - Simsim, corn, coconut.
 - Beans, maize, sorghum.
9. The following plants reproduce through spores **except**
- yeast
 - moss
 - ferns
 - liverworts.
10. Plants that grow in water have flexible stems **mainly** to
- increase transpiration
 - minimise absorption of water
 - prevent breakage due to strong water currents
 - prevent water from settling on them.
11. Which of the following pairs of diseases is an infant immunised against at birth and 14 weeks **respectively**?
- Polio and BCG
 - BCG and Tetanus
 - Polio and yellow fever
 - BCG and measles.
12. Which of the following teeth related problems is caused by plague?
- Bad smell
 - Tooth cavities
 - Tooth decay
 - Bleeding gums.
13. The following are ways in which HIV and AIDS can be transmitted **except** through
- blood transfusion
 - breast feeding
 - sleeping together
 - sharing body piercing objects.
14. The following are signs and symptoms of a water borne disease.
- Fever.*
 - Swimmer's itch.*
 - Skin rash.*
 - Blood in urine.*
- The **best** method of preventing the disease described above is
- sleeping under treated mosquito net
 - vaccination
 - wearing protective clothing when working water.
 - eating balanced diet.
15. Which of the following are effects of HIV and AIDS infection to the nation?
- School drop out
 - Low living standards
 - Loss of income
 - Stigmatisation.

16. The following are sexually transmitted diseases **except**
- A. Gonorrhoea
 - B. Syphilis
 - C. Typhoid
 - D. Chancroid.

17. Hassan was instructed by the doctor to take 2 tablets in the morning, 2 in the afternoon and two in the evening. Hassan forgot to take the medicine in the evening. What should Hassan do?
- A. Continue taking the medicine normally.
 - B. Take four tablets in the evening to recover the lost ones.
 - C. Stop taking the medicine.
 - D. Revisit the doctor for advice.

18. The figure below represents a certain type of cloud.



- Which of the following is a characteristic of the cloud above?
- A. Found low in the sky and white in colour.
 - B. Has a flat base and is found high in sky.
 - C. Dark grey in colour and found low in the sky.
 - D. White in colour and covers the whole sky.

19. The following materials were collected by class five pupils to construct a certain weather instrument.
- (i) Thread.
 - (ii) Cork.
 - (iii) Thin walled glass bottle.
 - (v) Ink and a basin.

The weather instrument that the pupils were constructing was **likely** to be

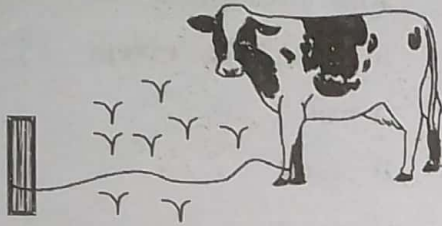
- A. Raingauge
 - B. Windsock
 - C. Liquid thermometer
 - D. Air thermometer.
20. The chart below shows weather changes on different days as recorded by pupils. On which day were people **likely** to carry umbrellas throughout the day?

MON		
TUE		
WED		
THUR		

- A. Wednesday
 - B. Monday
 - C. Tuesday
 - D. Thursday.
21. The following are adaptations of swimming animals **except** that they have
- A. streamlined bodies
 - B. hollow bones
 - C. webbed feet
 - D. fins.

22. Which of the following animals can be classified together with salamander?
- A. Gecko
 - B. Turtle
 - C. Newt
 - D. Shark.

23. The diagram below shows a method of grazing.

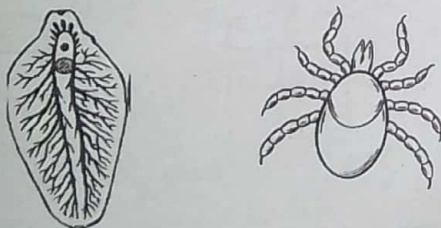


- Which of the following is **not** true about the above method of grazing?
- A. It requires little land for grazing.
 - B. Less labour is required.
 - C. Animal graze in a controlled area.
 - D. It is effective where the farmer has many animals.

24. Which of the following animals is **not correctly** matched with its products?

A. Sheep	Mutton
B. Broilers	Eggs
C. Goat	Mohair
D. Cattle	Beef.

25. The diagram below shows some livestock parasites.



Which of the following methods would be the **best** to control the parasites shown above?

- A. Dusting
 - B. Spraying
 - C. Dipping
 - D. Rotational grazing.
26. Four pupils Jane, John, Njoki and Joel used different amounts of soap to wash their school uniforms using water from different sources as shown below.

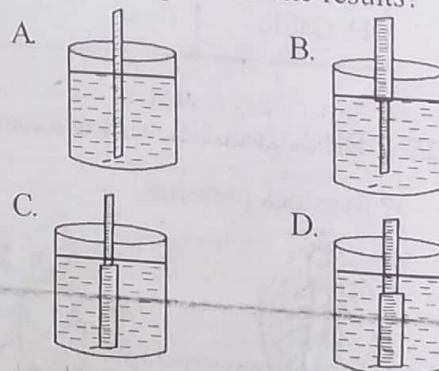
Name	Amount of soap used
Jane	20g
John	15g
Njoki	250g
Joel	10g

Who among the four pupils is **likely** to have used hard water to wash school uniform?

- A. Njoki
 - B. Jane
 - C. Joel
 - D. John
27. The following are recreational uses of water **except**
- A. boat racing
 - B. water skiing
 - C. surfing
 - D. skating.

28. Pupils collected a tin, garden soil, source of heat and a lid. Which component of the soil were they **likely** to investigate?
- Organic matter.
 - Moisture.
 - Minerals.
 - Living organisms.
29. The soil that cracks when dry also
- has lowest capillarity
 - becomes water -logged during rain
 - has large air spaces
 - has good drainage.
30. Pupils noted that some roots of trees were been exposed to the surface. Which type of soil erosion was **likely** to be taking place?
- Rill erosion
 - Gulley erosion
 - Sheet erosion
 - Splash erosion.
31. Which of the following pairs consists of major non-living components of the environment?
- Sound and light.
 - Soil and air.
 - Water and plants.
 - Animals and plants.

32. The following are ways of conserving soil **except**
- burning vegetation cover
 - contour farming
 - proper stocking
 - mulching.
33. The following materials are required when investigating whether light travels in a straight line **except**
- nail
 - candle
 - mirror
 - cardboards.
34. Which of the following forms of energy can travel through a vacuum?
- Sound and light
 - Heat and light
 - Electricity and sound
 - Heat and sound.
35. A ruler was vertically dipped in a glass of water during a Science practical. Which of the following diagrams **correctly** represents the results?



36. Which of the following is a natural way of lighting a house?

- A. Using windows
- B. Using lamps
- C. Using moon
- D. Using torch.

37. The following are electrical appliances used at home **except**

- A. iron box
- B. improved jiko
- C. radio
- D. immersion heater.

38. The following are characteristics of a certain state of matter.

- (i) Has definite shape.
- (ii) Has definite mass.
- (iii) Has definite volume.

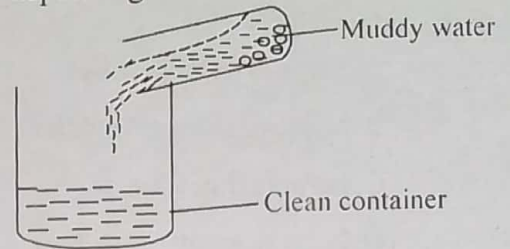
The state of mater described above is **likely** to be

- A. water vapour
- B. petrol
- C. ice
- D. milk.

39. Which of the following substances will float on water?

- A. Crushed coin
- B. Block of wood
- C. Ash
- D. Maize grains.

40. The diagram below shows a method of separating mixture.



The method of separating mixture shown above is **likely** to be

- A. evaporation
- B. sieving
- C. winnowing
- D. decanting.

41. Which of the following pairs consists of magnetic materials only?

- A. Tin and silver
- B. Aluminium and steel
- C. Cobalt and tin
- D. Copper and aluminium.

42. The importance of charcoal in the home made filter is to

- A. kill germs in the water
- B. absorb the colour of dirty water
- C. warm dirty water
- D. hold water.

43. Which of the following groups of food consists of body building foods only?

- A. Ground nuts, pork, black beans
- B. Beef, milk, kales
- C. Rice, meat, pawpaw
- D. Rice, chapati, ugali.

44. The following are importances of water in the diet **except**

- A. helps to remove waste
- B. helps to prevent dehydration
- C. helps in digestion
- D. helps to empty one's bowels.

45. Which of the following foods can be preserved using ash?

- A. Fish
- B. Sukumawiki
- C. Maize grains
- D. Eggs

46. A child with wasted muscles and swollen stomach should be fed on

- A. proteins
- B. enough balanced diet
- C. food rich in iron
- D. vitamins.

47. The diagram below represents a vehicle tyre.



The importance of the treads is to

- A. make the tyre beautiful
- B. reduce friction
- C. increase grip
- D. last longer.

48. The tendency of an object to remain in its state whether in motion or at rest is known as

- A. friction
- B. weight
- C. gravity
- D. inertia.

49. Which of the following pairs of levers have the position of load, effort and the fulcrum in the same position when in use

- A. Spade and crowbar
- B. Claw hammer and crowbar
- C. Wheelbarrow and claw hammer
- D. Spade and wheelbarrow.

50. The following are reasons for proper storage of tools **except** to

- A. avoid accidents
- B. prevent theft
- C. enhance rusting
- D. last longer.

NB: For a comprehensive revision in Science get yourself a copy of 'SIGNAL K.C.P.E REVISION SCIENCE' from Signal Publishers. AVAILABLE AT BOOKSHOPS COUNTRYWIDE.

SIGNAL EXAMS 2022
FOURTH K.C.P.E SIGNAL
MATHEMATICS

Time: 2 hours

READ THESE INSTRUCTIONS CAREFULLY

1. You have been given this question booklet and a separate answer sheet. The question booklet contains 50 questions.
2. Do any necessary rough work in this booklet.
3. When you have chosen your answer, mark it on the **ANSWER SHEET**, not in the question booklet.

HOW TO USE THE ANSWER SHEET

4. Use only an ordinary pencil.
5. Make sure that you have written on the answer sheet:
YOUR INDEX NUMBER
YOUR NAME
NAME OF YOUR SCHOOL
6. By drawing a **dark line** inside the correct number, mark your full Index Number (i.e. School Code Number and the three-figure Candidate's Number) in the grid near the top of the answer sheet.
7. Do not make any marks outside the boxes.
8. Keep your answer sheet as clean as possible and **DO NOT FOLD IT**.
9. For each of the questions 1 - 50 four answers are given. The answers are lettered A, B, C and D. In each case only **ONE** of the four answers is correct. Choose the correct answer.
10. On the answer sheet, the correct answer is to be shown by drawing a **dark line** inside the box in which the letter you have chosen is written.

Example:
In the question booklet:

11. What is the square root of; $\sqrt{0.1296}$?

- A. 0.06
- B. 0.36
- C. 0.6
- D. 3.6

The correct answer is C (0.6)

On the answer sheet:

1 (A|B|C|D) 11 (A|B|C|D) 21 (A|B|C|D) 31 (A|B|C|D) 41 (A|B|C|D)

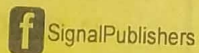
In the set of boxes numbered 11, the box with the letter C printed in it is marked.

11. Your **dark line** **MUST** be within the box.
12. For each question **ONLY ONE** box is to be marked in each set of four boxes.

This question paper consists of 8 printed pages

©Signal Publishers Limited 2022

Website: www.signalpublishers.com. Email: info@signalpublishers.com



1. What is twelve million, one hundred and twenty thousand and twelve and twelve thousandths written in symbols?

- A. 12120012.0012
- B. 12121020.12
- C. 12012012.012
- D. 12120012.012

2. How many groups of hundreds are there in the value of digit 5 in the number 850266?

- A. 50
- B. 5
- C. 500
- D. 5000

3. Arrange the following fractions in ascending order. $\frac{2}{7}, \frac{3}{8}, \frac{4}{9}, \frac{1}{6}$

- A. $\frac{4}{9}, \frac{3}{8}, \frac{2}{7}, \frac{1}{6}$
- B. $\frac{2}{7}, \frac{1}{6}, \frac{3}{8}, \frac{4}{9}$
- C. $\frac{1}{6}, \frac{2}{7}, \frac{3}{8}, \frac{4}{9}$
- D. $\frac{1}{6}, \frac{3}{8}, \frac{2}{7}, \frac{4}{9}$

4. A cow produces 10 litres of milk in the morning and 8 litres in the evening. 4 litres are used by the household while the rest is sold. If the cost of one litre is sh. 39, how much money did the family earn in February and March 2012?

- A. Sh. 32214
- B. Sh. 32760
- C. Sh. 42120
- D. Sh. 41418

5. A metallic pipe of diameter 2.1cm and 1.60m long was painted on its outer surface. What area of the pipe was painted?

- A. 2217.6cm²
- B. 1108.8cm²
- C. 115.73cm²
- D. 1056cm²

6. What is the value of;

$$\frac{2\frac{1}{4} + \frac{2}{3} \times \left(\frac{5}{8} + \frac{2}{3}\right) - 1\frac{1}{5}}{\sqrt{\frac{9}{16} + \frac{3}{8}}}$$

- A. $2\frac{39}{40}$
- B. $\frac{67}{80}$
- C. $\frac{79}{240}$
- D. $1\frac{19}{40}$

7. A cylindrical tank with a diameter of 1.4m and a height of 14m is filled with water. If 3080 litres of water is drawn from the tank, what is the height of the remaining water?

- A. 2m
- B. 10m
- C. 12m
- D. 4m

8. In a certain year, the population of a town was 70000. 60% of the population were female while the rest were men. The population of male later increased by 10% while that of female reduced by 10%. What was the new population of the town?

- A. 70000
- B. 68600
- C. 72400
- D. 69300

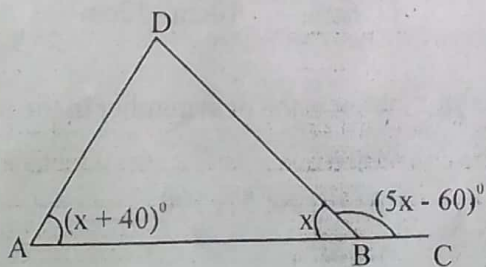
9. The table below shows how a farmer utilized his 30 hectares of land.

Land use	Maize	Beans	Coffee	Tea	Livestock
Size in Ha	5	7	8	4	6

If this information was plotted on a pie chart, how many more degrees would represent coffee than maize?

- A. 96°
 B. 60°
 C. 48°
 D. 36°
10. A bicycle wheel has a radius of 1.4m. How many revolutions will it make to cover a distance of 13.2km?
 A. 15000
 B. 150
 C. 1500
 D. 3000
11. What is 876.5738 rounded off to the nearest hundredths?
 A. 876.57
 B. 876.58
 C. 876.50
 D. 876.60
12. What is the simplified form of the expression; $7x(2y - 4) + 3(xy - 4x)$?
 A. $17xy + 40x$
 B. $17xy - 40x$
 C. $17xy - 16x$
 D. $17xy + 16x$

13. What is the value of the angle ADB in the figure below?



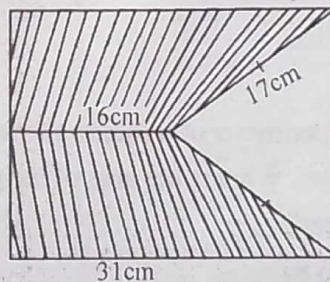
- A. 80°
 B. 40°
 C. 140°
 D. 60°

14. A lorry was used to transport 861 bags of maize. If it has the capacity to carry 70 bags per trip, how many trips did it make to carry all the bags?

- A. 12
 B. $12\frac{3}{10}$
 C. 13
 D. 14

15. Construct triangle XYZ such that line $XY = 6\text{cm}$, $YZ = 8\text{cm}$ and angle $XYZ = 100^\circ$. Draw a circle whose circumference touches the vertices of the triangle. What is the measure of the diameter?
 A. 5.5cm
 B. 2.8cm
 C. 11cm
 D. 9.4cm

16. What is the area of the unshaded part in the figure below?



- A. 168cm^2
 B. 144cm^2
 C. 120cm^2
 D. 180cm^2

17. Jeremy used his salary as follows; $\frac{1}{3}$

on rent, $\frac{1}{8}$ on fees, $\frac{1}{3}$ of the remainder on food and saved the rest. If he saved sh. 5200, how much does he earn?

- A. Sh. 19200
 B. Sh. 14400
 C. Sh. 16200
 D. Sh. 6200

18. What is the value of x in the equation;

$$\frac{6(2x-8)}{5} + 2x = 52?$$

- A. 14
B. $7\frac{1}{7}$
C. $4\frac{6}{11}$
D. 15
19. What is the sum of all prime numbers between 1 and 60?
A. 441
B. 491
C. 440
D. 492
20. The area of a square is 156.25cm^2 . What is its perimeter?
A. 12.5cm
B. 25cm
C. 12.25cm
D. 50cm
21. The perimeter of a square garden is 1640m. What is the area of the garden in Ares?
A. 16.81
B. 1681
C. 168100
D. 1.681
22. A carton measures 0.6m long by 0.9m wide and 1.8m high. Cylindrical tins of radius of 7.5cm and a height of 30cm were packed inside the carton. How many tins were packed in the carton?
A. 576
B. 288
C. 396
D. 144

23. Tonny bought the following items from a shop.

- Two - 2kg tins of cooking fat @ sh. 220.

- $1\frac{1}{2}$ kg of sugar @ sh. 110

- A 2 kg packet of maize flour @ sh.120

- 5 match boxes for sh. 20.

He gave the shopkeeper two sh. 500 notes. How much balance did he receive?

- A. Sh. 145
B. Sh. 135
C. Sh. 255
D. Sh. 225
24. What is the value of p in the equation;

$$\frac{2}{3}(6p-9) = 2(p-1)$$

- A. 2
B. 3
C. 4
D. 8
25. Which of the following measurements will form a right angled triangle?
A. 0.4cm 0.6cm 0.8cm
B. 0.8m, 1.5m, 170cm
C. 2cm, 3cm, 4cm
D. 6cm, 10cm, 12cm

26. What is the next number in the pattern below?

13, 17, 26, 51, 100, _____

- A. 181
B. 164
C. 221
D. 200

27. The table below shows fare in shillings from town A to F.

A					
40	B				
80	60	C			
120	70	40	D		
190	140	70	30	E	
200	160	90	50	40	F

Boni travelled from town A to town C where he picked his wife and two children. They went to town F then took a direct vehicle to town A. If the fare of a child is half that of an adult, how much did they pay altogether?

- A. Sh. 780
 B. Sh. 870
 C. Sh. 950
 D. Sh. 1080
28. Lavina paid sh.850 for an item after he was allowed a 15% discount. What was the marked price of the item?
 A. Sh. 722.50
 B. Sh. 1000
 C. Sh. 997.50
 D. Sh. 9100
29. A salesman is given a certain commission for the value of goods sold above sh. 40000. On a certain month, he received a commission of sh. 3200 after selling goods worth sh. 120000. What was the percentage commission given?
 A. 4%
 B. $2\frac{2}{3}\%$
 C. 2%
 D. 8%

30. A meeting was attended by men, women and children. Children were five times as many as women. There were two thousand more children than men. If there were two thousand and twenty women in the meeting, how many people attended the meeting altogether?

- A. 20200
 B. 12140
 C. 22200
 D. 20220
31. What is the value of;

$$\frac{3.4 - (0.28 \div 0.2) + 0.8}{0.7 \times 0.02}?$$
- A. 0.2
 B. 2
 C. 20
 D. 200

32. 8 men were employed to dig a certain piece of land in 12 days. After working for 3 days, 4 more men were hired. How many days did the work take to complete?
 A. 9
 B. 12
 C. 3
 D. 8

33. The hire purchase price of a sewing machine is 20% more than the marked price. Achieng bought it by paying 9 equal monthly installments of sh. 3200. If the marked price was sh. 32000. How much deposit did she pay?
 A. Sh. 9600
 B. Sh. 6400
 C. Sh. 3200
 D. Sh. 28800

34. A man borrowed sh. 15000 from a financial institution. He repayed a total of sh. 16050 after 8 months. At what rate per annum was the interest charged?

- A. $\frac{7}{8}\%$
- B. 21%
- C. $10\frac{1}{2}\%$
- D. 46.7%

35. The mean mass of 5 boys is 41.6kg. When the mass of their teacher is added, the mean mass becomes 50kg. What is the mass of the teacher?

- A. 83kg
- B. 91.6kg
- C. 70.8kg
- D. 92kg

36. What is the value of;

$$\frac{3}{4} \text{ of } \left(\frac{2}{3} + \frac{3}{5} \div \frac{3}{10} \right) - \frac{1}{2} \times \frac{4}{5} ?$$

- A. $\frac{3}{10}$
- B. $3\frac{1}{3}$
- C. $2\frac{2}{3}$
- D. $1\frac{3}{5}$

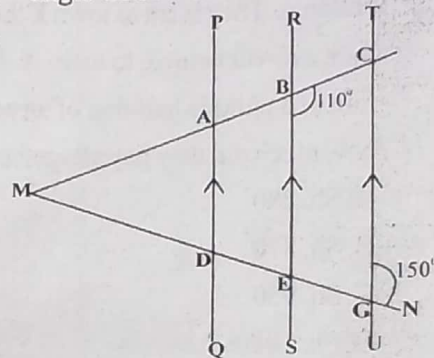
37. The diameter of a pipe is 1.4cm. The pipe is 80cm long. How much water would fill the pipe if one end is blocked?

- A. 12320L
- B. 12.32L
- C. 123.2L
- D. 0.1232L

38. James had $(a + 1)$ oranges. John had twice as much as James. Peter had 10 oranges less than what both James and John had. Which expression represents the number of oranges Peter had?

- A. $3a - 7$
- B. $3a + 3$
- C. $3a - 3$
- D. $3a - 13$

39. In the figure below, lines PQ, RS, and TU are parallel. Angle TGN is 150° and angle CBE = 110° .



What is the size of angle DMA?

- A. 150°
- B. 60°
- C. 80°
- D. 45°

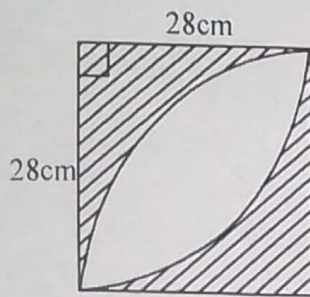
40. The 8th February 2020 was on a Sunday. On which day was 15th May of the same year?

- A. Sunday
- B. Friday
- C. Thursday
- D. Saturday

41. Construct triangle ABC such that line $AB = 5\text{cm}$, $BC = 8\text{cm}$ and angle $ABC = 130^\circ$. Drop a perpendicular line from point B to meet line AC at X. What is the measure of BX?

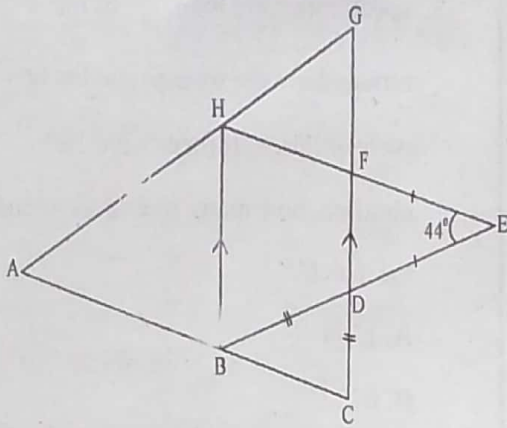
- A. 3.0cm
- B. 2.6cm
- C. 6.1cm
- D. 2.3cm

42. What is the area of the unshaded part in the figure below?



- A. 224cm^2
B. 336cm^2
C. 392cm^2
D. 448cm^2
43. A cashier had sh. 10000 in her cashbox in the morning. By noon the money had increased by 15% in the box, followed by another 10% increase in the afternoon. How much was in the cashbox by the end of the day?
A. Sh. 12650
B. Sh. 2500
C. Sh. 11500
D. Sh. 11650
44. A car dealer sold his car for sh. 288000 making a 10% loss. At what price would he have sold the car to make a profit of 25%?
A. Sh. 360000
B. Sh. 320000
C. Sh. 396000
D. Sh. 400000
45. In a football match, $\frac{5}{7}$ of the spectators were men, $\frac{1}{6}$ of the remainder were women and the rest were children. If there were 160 children, how many spectators attended the match?
A. 1344
B. 672
C. 3360
D. 432
46. A car covered a distance of 135km in 3 hours. What was its speed in m/s?
A. 45m/s
B. 162m/s
C. 15m/s
D. 12.5m/s
47. In a certain school, $\frac{2}{3}$ of the students are boys. On the last day, $\frac{3}{4}$ of the girls and $\frac{1}{8}$ of the boys were absent. What is the ratio of the number of boys to the number of girls absent?
A. 3:1
B. 2:3
C. 1:3
D. 6:1

48. In the figure below, line $FE = DE$ and $DC = DB$. Line BH is parallel to CG . Angle $HEB = 44^\circ$.

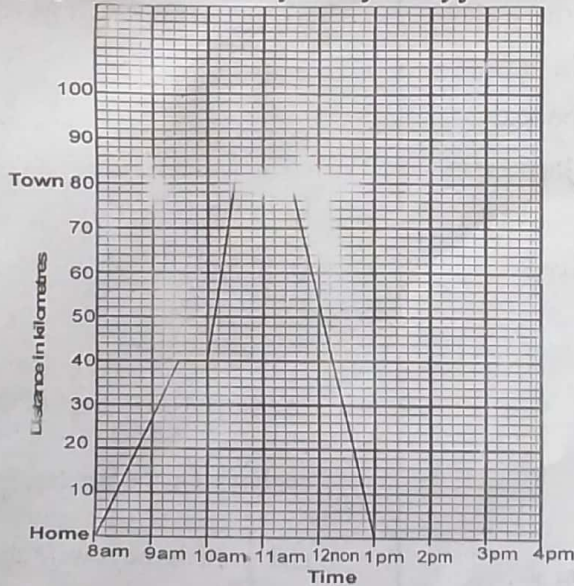


What is the measure of angle ABH ?

- A. 68°
 B. 44°
 C. 56°
 D. 136°

49. What is the value of;
 $319964 \div 41$?
- A. 7984
 B. 7804
 C. 784
 D. 7840

The graph below shows a cyclist's journey from home to town and back.



50. What was the average speed for the whole journey?
- A. 32km/h
 B. 16km/hr
 C. $26\frac{2}{3}$ km/hr
 D. $53\frac{1}{3}$ km/h

NB: For a comprehensive revision in Mathematics get yourself a copy of 'SIGNAL K.C.P.E REVISION MATHEMATICS' from Signal Publishers. AVAILABLE AT BOOKSHOPS COUNTRYWIDE.

SIGNAL EXAMS 2022
FOURTH K.C.P.E SIGNAL
SOCIAL STUDIES
AND
RELIGIOUS
EDUCATION

Time: 2 hours 15 minutes

READ THESE INSTRUCTIONS CAREFULLY

1. You have been given this question booklet and a separate answer sheet. The question booklet contains 90 questions.
2. Do any necessary rough work in this booklet.
3. When you have chosen your answer, mark it on the **ANSWER SHEET**, not in the question booklet.

HOW TO USE THE ANSWER SHEET

4. Use an ordinary pencil.

5. Make sure that you have written on the answer sheet:

YOUR INDEX NUMBER

YOUR NAME

NAME OF YOUR SCHOOL

6. By drawing a dark line inside the correct numbered boxes mark your full Index Number (i.e. School Code Number and the three-figure Candidate's Number) in the grid near the top of the answer sheet.

7. Do not make any marks outside the boxes.

8. Keep your answer sheet as clean as possible and do not fold it.

9. For each of the questions 1 – 90, four answers are given. The answers are lettered A, B, C and D. In each case only **ONE** of the four answers is correct. Choose the correct answer.

10. On the answer sheet the correct answer is to be shown by drawing a dark line inside the box in which the letter you have chosen is written.

Example

In the question booklet:

33. Which of the following rivers does not drain into the Atlantic Ocean?

- A. R. Orange
- B. R. Cuanza
- C. R. Niger
- D. R. Shebelle.

The correct answer is "D"(R. Shebelle)

On the answer sheet:

31 (A) (B) (C) (D) 32 (A) (B) (C) (D) 33 (A) (B) (C) (D) 34 (A) (B) (C) (D) 35 (A) (B) (C) (D)

In the set of boxes numbered 33, the box with the letter D printed in it is marked.

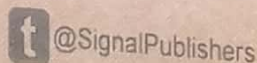
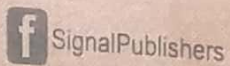
11. Your dark line **MUST** be within the box.

12. For each question **ONLY ONE** box is to be marked in each set of four boxes.

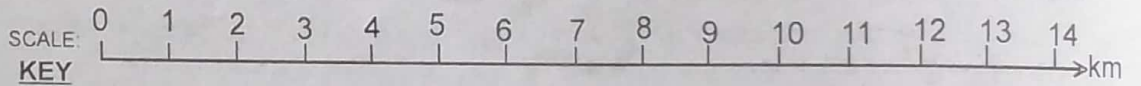
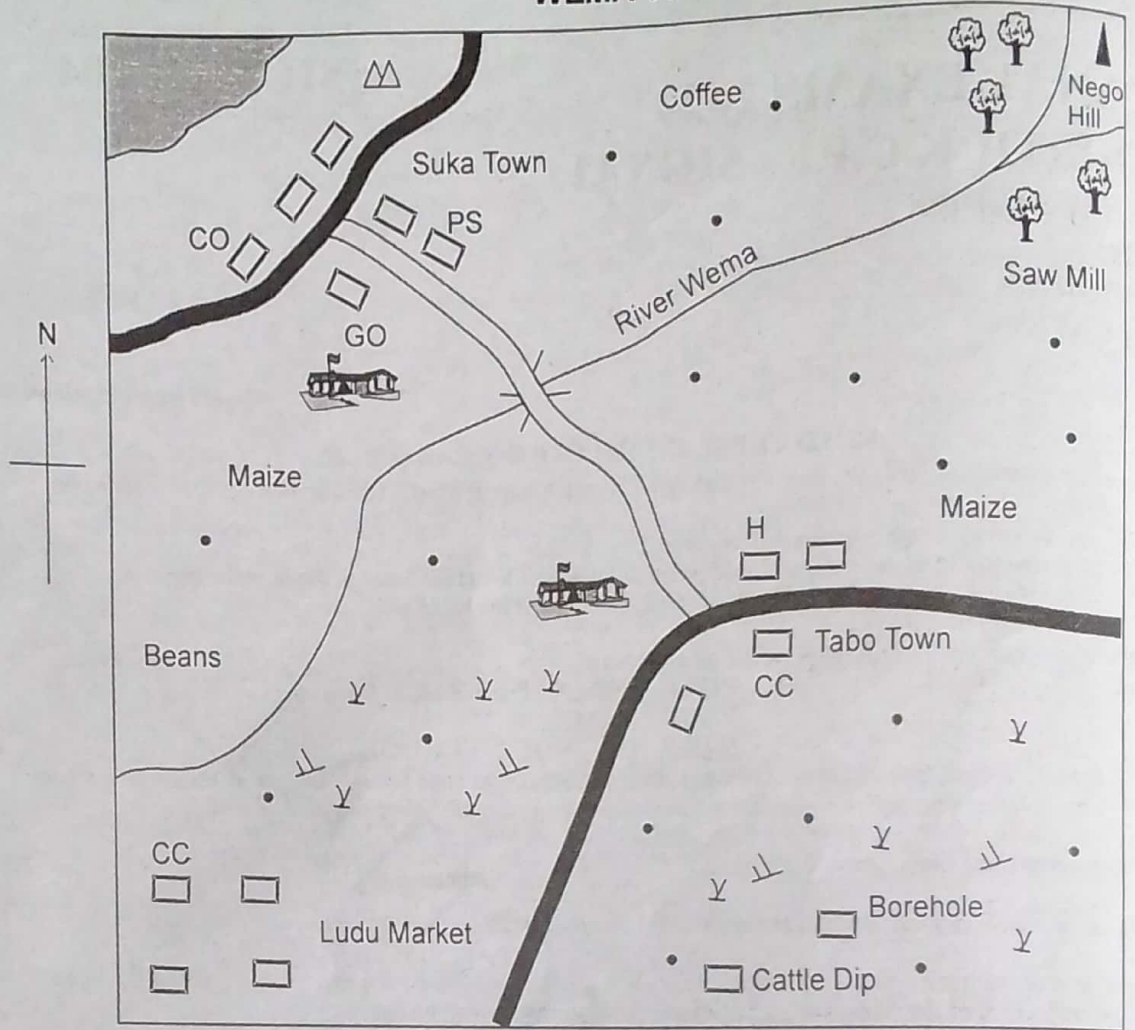
This question paper consists of 12 printed pages

© Signal Publishers Limited 2022

Website: www.signalpublishers.com. Email: info@signalpublishers.com



WEMA AREA



	Tarmac road	CC	Chief's Camp		Grass
	Murram Road	CO	County Offices		Pineapple Plantation
	Planted Forest		School		
	River and bridge		Shrubs		
	Build-up areas	GO	Governor's Office		
	Settlements	H	Hospital		
	Pineapple Canning Factory	PS	Police Station		

Study the map of Wema area and answer questions 1 - 7.

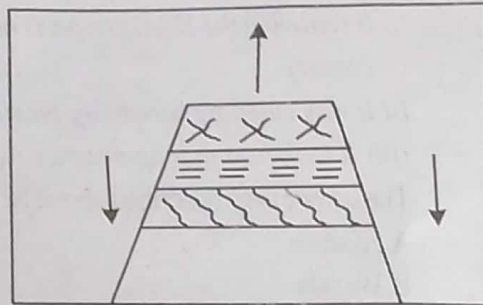
1. The land in Wema area generally slopes from
A. East
B. North
C. North East
D. South West.
2. The **approximate** distance of the murrum road from Suka town to Tobo town is
A. 10km
B. 8.0km
C. 13km
D. 15.5km
3. The **main** economic activity carried out in the southern part of Wema area is
A. livestock keeping
B. lumbering
C. coffee growing
D. pineapple growing.
4. Which one of the following statements about the forest in Wema area is **not true**? It
A. has softwood trees
B. found in a highland area
C. conserves water catchment areas
D. is a natural lowland forest.
5. The type of soil in the North eastern part of Wema area is **likely** to be
A. alluvial soil
B. volcanic soil
C. clay soil
D. sandy soil.
6. The location of the pineapple canning factory was **mainly** influenced by
A. nearness to raw materials
B. nearness to market
C. nearness to a tarmac road
D. availability of space.
7. Business people in Ludu market obtain their trading licenses from the
A. chief's camp in Ludu market
B. governor's office in Suka town
C. police station in Suka town
D. county offices in Suka town.

8. Testate succession is done in a family if the deceased
A. has left a lot of property
B. does not have children
C. had a written will
D. had not written a will.
9. Below are statements about a community in Eastern Africa.
(i) *It settled in the Northern parts of the country.*
(ii) *It was ruled by hereditary chiefs.*
(iii) *It took part in long distance trade.*
The community described above is
A. Akamba
B. Bagada
C. Maasai
D. Nyamwezi.
10. The **main** benefit of Victoria Falls along River Zambezi in Zimbabwe is that they
A. earn foreign exchange from tourism
B. are used for water skiing
C. are used to generate electricity
D. trap water for irrigation.
11. The **best** way of reducing road accidents in Kenya is by
A. increasing the number of traffic police officers
B. educating road users
C. expansion of roads
D. rewarding good drivers.
12. The **main** demand of the Convention People's Party(CPP) during the colonial period in Ghana was
A. return of African land
B. immediate independence
C. Africans to be allowed to grow cocoa
D. increase in African members in the legislative council.

SIGNAL/SOCIAL/STD. 8

13. Which one of the following traditional weather observation methods indicates the onset of rains?
- Appearance of full moon.
 - Shedding of leaves by some trees.
 - Appearance of locusts.
 - Increased temperatures during the night.

14. The diagram below shows the formation of a mountain.



A mountain in Africa that was formed through the process shown above is

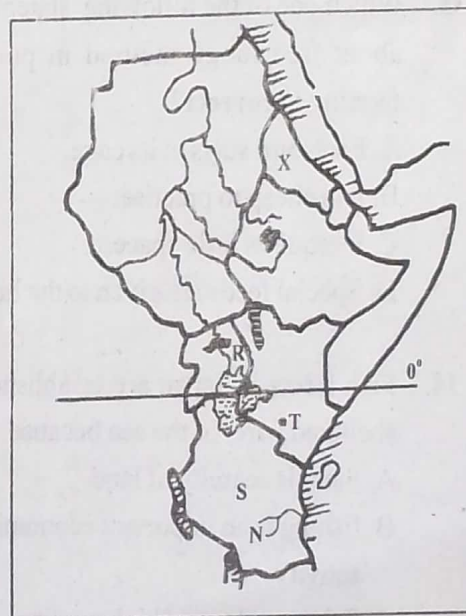
- mount Ruwenzori
 - mount Kilimanjaro
 - Drakensberg mountains
 - Cape ranges.
15. Below is a description of a town in Kenya.
- It was visited by the early visitors.
 - It has few industries.
 - Its beaches attract tourists.
- The town described above is
- Mombasa
 - Malindi
 - Kisumu
 - Nakuru.
16. A benefit of assimilation in Senegal to Africans is that they
- could get jobs in France
 - were exempted from paying taxes
 - were allowed to practise their customs
 - could join political parties.

17. A responsibility of children in a family is
- providing basic needs
 - building house for their family
 - taking care of family property
 - paying school fees.
18. Three of the following reasons led to the fall of the kingdom of Old Ghana **except**
- decline of the Trans-Saharan trade
 - invasion by the Almoravids
 - sucessional disputes
 - invasion of West Africa by the French.
19. Most people in Germany live in towns because
- most people are educated
 - the population of Germany is high
 - most rural areas are dry
 - towns in Germany are highly industrialized.
20. Which one of the following statements about the geographical position of Kenya is **correct**? The country
- lies to the east of the prime meridian
 - lies in the northern hemisphere
 - border the Atlantic ocean
 - lies to east of Sudan.
21. The **main** role of opposition parties in Kenya is
- ensuring fair treatment of citizens by the government
 - nominating members of the National Assembly
 - opposing governmental policies
 - removing unpopular leaders.

22. The **best** way of conserving wildlife in Kenya is
- fencing all game parks
 - controlling the sale of trophies
 - establishing animal orphanages
 - educating people on the importance of wildlife.
23. The governments of Kenya and Swaziland are similar in that
- there are two house of parliament
 - the winning party forms the government
 - the head of state is elected by voters
 - there is a prime minister.
24. Location of bread making industries is **mainly** influenced by
- availability of raw materials
 - nearness to good roads to transport breads
 - nearness to market of bread
 - availability of labour.
25. Justice in Kenya is administered by
- the police force
 - the president
 - the legislative
 - the judiciary.
26. The Nandi people resisted British colonial rule in Kenya **mainly** because
- their traditional leader encouraged them
 - they wanted to preserve their independence
 - they wanted to obey prophecy
 - the British were building a railway line through their land.

27. The sun rises earlier in Mogadishu than in Lagos because
- Mogadishu lies at a lower altitude
 - the earth rotates from East to west
 - Mogadishu is to the East of Lagos
 - the earth is round.
28. Which one of the following statements about the Fulani and Tswana people is **true**? They
- practise nomadic pastoralism
 - live in high rainfall areas
 - grow fodder crops for their animals
 - belong to the same language group.

Use the map of Eastern Africa below to answer questions 29 to 32.



29. The sea port of the country marked X is
- Asmara
 - Djibouti
 - Port Sudan
 - Mitsiwa.
30. The pre-historic site marked T is
- Ologesailie
 - Fort Ternan
 - Hyrax hill
 - Kariandusi.

31. Three of the following statements about the country marked **S** are true **except** that it
- is a major exporter of coffee
 - a member of the Inter - Governmental Authority on Development(IGAD)
 - attained Independence in 1961
 - was taken by Germany during the partition of Eastern Africa.
32. The river marked **N** is
- River Panagani
 - River Ruvuma
 - River Rufiji
 - River Mara.
33. Which one of the following statements about free range method in poultry farming is **correct**?
- Each bird stays in its cage.
 - It is cheap to practise.
 - It requires little space.
 - Special feeds are given to the bird.
34. Fish farms in Japan are established in sheltered parts of the sea because
- there is scarcity of land
 - fishing is an important economic activity
 - fish reared are of high quality
 - modern fishing equipment are used.
35. The collaboration of king Lewanika with the British in Zambia led to
- construction of railway lines in Zambia
 - construction of schools in Zambia
 - introduction of new crops
 - Europeans acquiring mining rights.
36. The role of prefects in school management is
- reporting teachers who do not teach
 - supervising school activities
 - preparing the school routine
 - ensuring proper use of school funds.
37. Nominated members of the National Assembly in Kenya are appointed by
- political parties
 - the president
 - registered voters
 - the body incharge of elections.
38. Homo Erectus was able to perform the following duties **except**
- making stone tools
 - using fire
 - building thatched shelters
 - hunting animals for food.
39. A rainguage is placed slightly above the ground level in order to
- make it visible from far
 - prevent it from falling
 - make it collect all the rainfall
 - prevent running water from getting inside.
40. Which one of the following was **not** an achievement of Gamal Abdel Nasser? He
- built Aswan High dam
 - nationalized the Suez Canal
 - built the Suez Canal
 - introduced land reforms.
41. The following statements about trees that grow in planted forests is correct **except**
- most trees have straight trunk
 - they provide pulp for paper making
 - different species of trees grow together
 - trees grow in straight rows.

42. The British used indirect rule policy to administer Northern Nigeria because
- the area had able traditional rulers
 - Africans resisted colonial rule
 - the area lacked natural resources
 - Britain had many colonies in Africa.
43. It is important for adult citizens of Kenya to take part in elections in order to
- obey the laws of the country
 - exercise their democratic rights
 - set good examples to the youth
 - support the governmental in implementing projects.
44. Flowers in Netherlands are grown in reclaimed areas from the sea known as
- paddocks
 - ranches
 - polders
 - paddies.
45. The **main** problem facing farmers in Perkerra irrigation scheme is
- siltation of water canals
 - destruction of crops by birds
 - lack of seeds for growing
 - inadequate water in the dry season.
46. Which one of the following physical features is **correctly** matched with the country it is found
- | Physical feature | Country |
|--------------------|----------|
| A. Murchison falls | Uganda |
| B. Bie plateau | Ethiopia |
| C. Danakil Alps | Somalia |
| D. Bileshe plains | Angola. |
47. The interaction of the Bantu and the Cushites before the coming of the Europeans led to
- Cushites getting cattle from the Bantu
 - establishment of a new language
 - Bantu acquiring grains from the Cushites
 - Bantu learning circumcision from the Cushites.
48. The **main** reason why mobile phone communication has expanded rapidly is that
- it is fast and convenient
 - it is cheap
 - many people are literate
 - many areas have electricity.
49. Which one of the following was a negative effect of settler farming in Kenya?
- Introduction of new crops.
 - Establishment of towns.
 - Introduction of new farming methods.
 - Displacement of Africans.
50. Amina was denied by her husband to join a women's organization that promotes family values. She was denied the freedom of
- association
 - expression
 - movement
 - education
51. **Most** mountains on the floor of the Rift valley were formed through
- folding
 - volcanicity
 - faulting
 - erosion.

52. Which one of the following communities is **not** a Semitic speaker in Eastern Africa?
- Amharans
 - Arabs
 - Fulani
 - Falasha.
53. Which one of the following dams is **not** found along river Tana?
- Kamburu
 - Gitaru
 - Kindaruma
 - Aswan.
54. Citizenship by registration requires a person to
- be eighteen years or more
 - own property in Kenya
 - have lived in Kenya continuously for seven years or more
 - apply for citizenship 6 months before coming to Kenya.
55. Which one of the following communities had a king before the coming of Europeans?
- Baganda
 - Ameru
 - Nyamwezi
 - Maasai.
56. The **main** agricultural export of Ethiopia is
- cloves
 - coffee
 - cotton
 - cocoa.
57. Which one of the following countries of Eastern Africa is **not** a member of the East African Community(EAC)?
- South Sudan
 - Rwanda
 - Sudan
 - Burundi.
58. In Kenya, civil elections are held every five years to elect members of
- county executive
 - county assemblies
 - the senate
 - the National Assembly.
59. The executive arm of the government is headed by the
- chief justice
 - president
 - speaker
 - attorney general.
60. On a polling day in Kenya, a voter must produce
- an identity card
 - a voter's card
 - a political party membership card
 - an employment card.

NB: For a comprehensive revision in Social Studies get yourself a copy of 'SIGNAL K.C.P.E REVISION SOCIAL STUDIES' from Signal Publishers. AVAILABLE AT BOOKSHOPS COUNTRYWIDE.

SIGNAL EXAMS 2022

FOURTH K.C.P.E SIGNAL
ENGLISH

SECTION B:
COMPOSITION

Time: 40 Minutes

YOUR INDEX NUMBER	
YOUR NAME	
NAME OF YOUR SCHOOL	


READ THESE INSTRUCTIONS CAREFULLY

1. In the spaces provided above write your full index number, your Name and Name of your school.
2. Now open this paper, read the composition subject carefully and write your composition on the lines provided.
3. The composition must be written in English.

This Question Paper consists of 4 printed pages.

© Signal Publishers Limited 2022

Website: www.signalpublishers.com. Email: info@signalpublishers.com

 SignalPublishers  @SignalPublishers

SIGNAL/COMP/STD. 8

SIGNAL/COMP/STD. 8

NB: For a comprehensive guide in composition writing skills, different types of composition and marking tips, get yourself a copy of 'SIGNAL COMPOSITION GUIDE' from Signal Publishers. AVAILABLE AT BOOKSHOPS COUNTRYWIDE.

SIGNAL/COMP/STD. 8

SIGNAL EXAMS 2022

JARIBIO LA NNE

**KISWAHILI
SEHEMU YA PILI:
INSHA**

Muda: Dakika 40

NAMBA YAKO YA MTIHANI	
JINA LAKO	
JINA LA SHULE YAKO	

SOMA MAAGIZO HAYA KWA MAKINI

1. Kwenye nafasi zilizoachwa hapo juu andika namba yako kamili ya mtihani, jina lako na jina la shule yako.
2. Sasa fungua karatasi hii, soma kichwa cha insha kwa makini na uandike insha yako kwenye nafasi uliyoachiwa.
3. Insha lazima iandikwe kwa lugha ya Kiswahili.

Kijitabu hiki kina kurasa 4 zilizopigwa chapa.

© *Signal Publishers Limited 2022*

Website: www.signalpublishers.com. Email: info@signalpublishers.com



SignalPublishers



@SignalPublishers

SIGNAL/INSHA/DAR.8

Lined writing area with horizontal lines.

SIGNAL/INSHA/DAR. 8

TANBIHI: Kwa mwongozo kamili katika stadi za uandishi wa insha, mifano mbalimbali ya insha na vidokezo vya uhakiki, jipatie nakala ya 'KICHOCHEO CHA INSHA' kutoka Signal Publishers. Kinapatikana katika maduka ya vitabu kote nchini.

SIGNAL/INSHA/DAR. 8