

NAMEADM NO

SCHOOL.....CANDIDATE'S SIGN.....

CLASS.....DATE.....

233/1
CHEMISTRY
PAPER 1
(THEORY)
JUNE-2022

TIME: 2 HOURS

CHEMISTRY
PAPER 1
(THEORY)
TIME: 2 HOURS

KCSE TOP PREDICTION MASTER CYCLE 3

INSTRUCTION TO CANDIDATES

1. Write your name and Adm number in the spaces provided above
2. Sign and write the date of the examination in the spaces provided
3. Answer all the questions in the spaces provided
4. All working must be clearly shown where necessary.
5. **This paper consists of 11 printed pages**
6. **Candidates should check to ascertain that each page s printed as indicated and that no question is/are missing.**

FOR EXAMINAER'S USE ONLY

Question	Maximum score	Candidate's score
1-28	80	

1. a) State Graham's law of diffusion. (1mk)

.....
.....
.....

b) 50cm³ of nitrogen (ii) oxide was allowed to diffuse through a porous membrane in 20 seconds.

Calculate the time taken by equal volume of carbon (ii) oxide to diffuse through the same membrane.

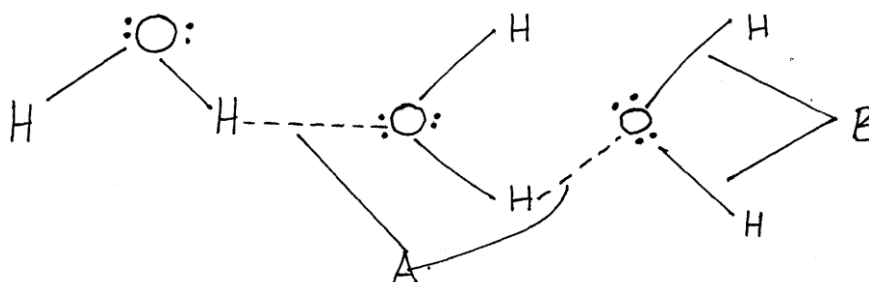
(C=12, N=14, O=16). (2mks)

.....
.....
.....
.....

2. State two functions of a fume chamber in a laboratory. (2mks)

.....
.....
.....

3. The diagram below shows a structure of water molecule.



Name the bonds labelled. (2mks)

i) A

.....

ii) B

.....

4. Two samples of water were put in separate beakers. They were boiled for sometime and allowed to cool. Equal volumes of soap were added to each sample and stirred. Water in beaker C readily formed lather with soap while water in beaker D required more soap to lather.

i) Write the formula of one salt likely to be in water in beaker. (2mks)

.....

a) C

.....

b) D

.....

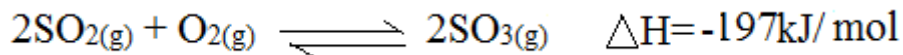
ii) Name one method that can be used to soften water in beaker D. (1mk)

.....
.....

5. Describe how you would prepare lead (ii) sulphate given the following reagents: dilute nitric (v) acid, distilled water, sodium sulphate solid and lead metal. (3mks)

.....
.....
.....
.....
.....

6. During manufacture of sulphuric (vi) acid, sulphur (iv) oxide is oxidised to sulphur (vi) oxide in the presence of vanadium oxide catalyst as shown below:



The reaction is carried out at a pressure of 3 atmospheres and a temperature of 450°C. State and explain the effect on the yield of sulphur (vi) oxide if the reaction is:

a) Carried out at 3 atmospheres and 600°C. (2mks)

.....
.....
.....

b) In absence of a catalyst. (2mks)

.....
.....
.....

7. a) Hydrogen gas was passed over 4.64g of an oxide of iron in a combustion tube until there was no further change. The mass of the final substance was found to be 3.36g. Determine the empirical formula of the oxide. (Fe=56, O= 16). (3mks)

.....

.....

.....

.....

.....

b) State the property of hydrogen demonstrated in the experiment above. (1mk)

.....

.....

8. Atoms of element X exist as $^{14}_6\text{X}$ and $^{12}_6\text{X}$.

a) What name is given to the two types of atoms? (1mk)

.....

.....

b) Use dot (.) and (x) diagram to represent electrons draw the atomic structure of x. (2mks)

9. Hydrogen sulphide gas was passed through a solution of iron (ii) chloride.

i) State two observations made. (2mks)

.....

.....

.....

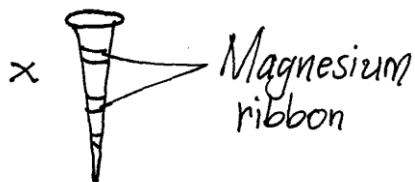
.....

ii) Write an equation for the reaction taking place in (i) above. (1mk)

.....

.....

10. Two clean iron nails of the same size were connected with wire to magnesium and silver stripes as shown.



State and explain the observation made on nail x and y if they were left in the open for 2 weeks. (2mks)

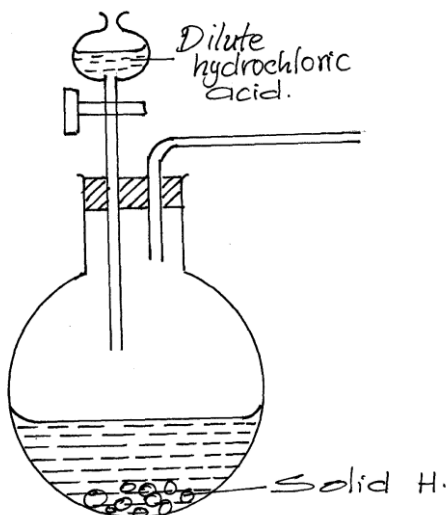
.....

.....

.....

.....

11. The diagram below shows an incomplete setup used to prepare sulphur (iv) oxide in the laboratory.



a) Identify solid H. (1mk)

.....

b) Complete the set up above to show how dry sulphur (iv) oxide may be collected. (2mks)

12. Some average bond energies are given below.

Bond	Energy in kJ/MOL
C-C	348
C-H	414
Cl- Cl	243
H-Cl	340
C - Cl	432

Determine whether the reaction below is exothermic or endothermic.

(3mks)



.....

.....

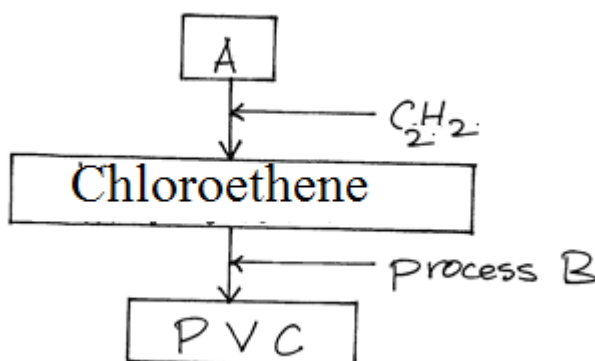
.....

.....

.....

.....

13. Study the scheme below and answer questions that follow



a) Identify reagent A.

(1mk)

.....

b) Name process B

(1mk)

.....

c) What does PVC stand for?

(1mk)

.....

14. Ethanedioic acid ($\text{H}_2\text{C}_2\text{O}_4$) is used instead of methanoic acid (HCOOH) to prepare carbon (ii) oxide in the laboratory. It gives equal volume of carbon (ii) oxide and carbon (iv) oxide.

a) Write an equation for the dehydration of ethanedioic acid.

(1mk)

.....

.....

b) Explain how pure carbon (ii) oxide can be obtained from the mixture.

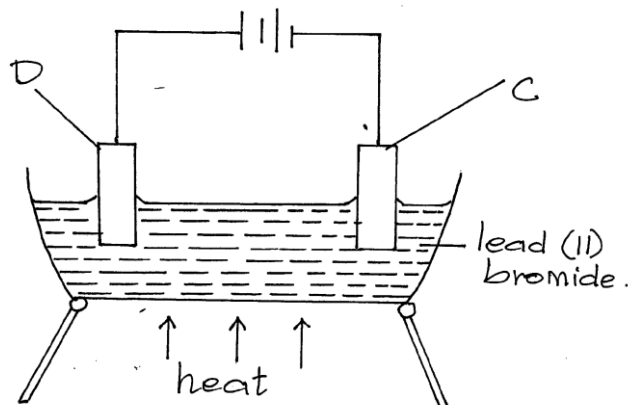
(2mks)

.....

.....

.....

15. The diagram below represents a set-up of apparatus used to investigate the effect of an electric current on lead (ii) bromide.



a) Describe the observation made at electrode C. (2mks)

.....

.....

.....

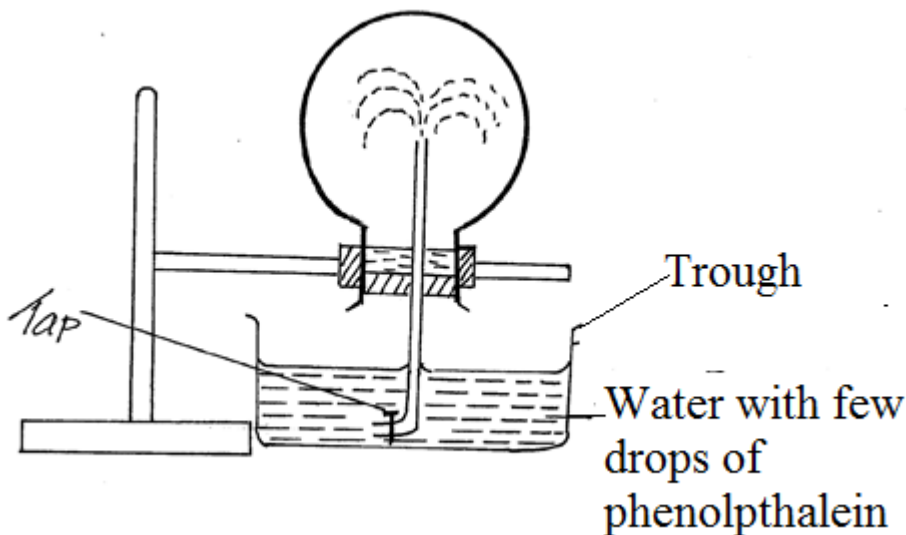
.....

b) State two applications of electrolysis. (1mk)

.....

.....

16. The set up below was used to investigate a property of ammonia gas.



i) What property of ammonia gas is being investigated? (1mk)

.....
.....

ii) The experiment above is commonly known as ‘the fountain experiment’; explain. (2mks)

.....
.....
.....

iii) Identify another gas that may be used instead of ammonia gas. (1mk)

.....

17. Draw a well labelled diagram to show how crystals of sodium chloride can be obtained from sodium chloride solution. (3mks)

18. a) Define the term solubility. (1mk)

.....
.....

b) 40g of a saturated solution yields 15g of salt when evaporated to dryness. Calculate the solubility of the salt. (2mks)

.....
.....
.....
.....
.....

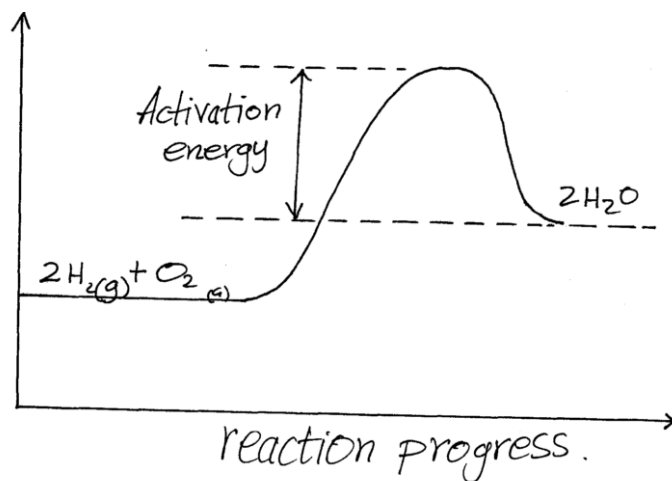
19. Increased levels of carbon (ii) oxide leads to global warming. Give two reasons why the amount of carbon (iv) oxide in the atmosphere is increasing gradually. (2mks)

.....
.....
.....
.....

20. Explain the observation made when a blue litmus paper is dipped in methylbenzene in which hydrogen chloride gas is bubbled through. (2mks)

.....
.....
.....

21. The reaction between hydrogen gas and oxygen releases energy. A student drew the reaction profile for the reaction between hydrogen gas and oxygen gas.



State two errors made when drawing the reaction profile. (2mks)

.....
.....
.....

22. Both water (18) and hydrogen sulphide (34) are molecular substances. However water has a higher boiling point than hydrogen sulphide. Explain. (2mks)

.....
.....
.....

23. The grid below represents part of a periodic table. Study it and answer the questions that follow.

	E				A		X	
R				G			C	
					Q			

a) How do the atomic radii of R and G compare. (1mk)

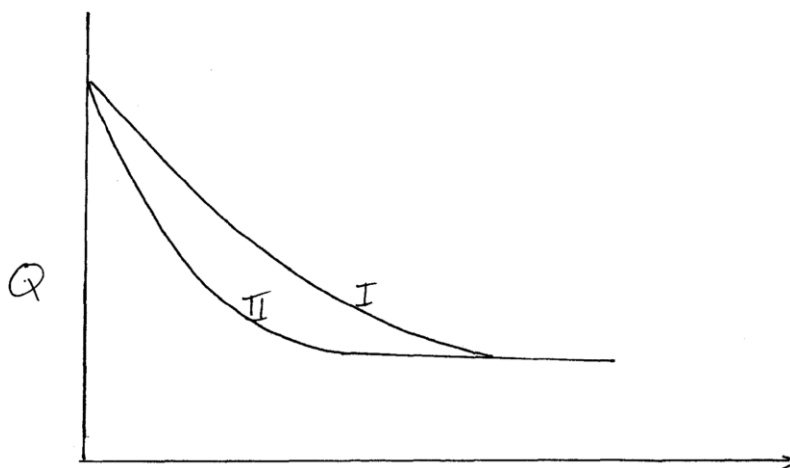
.....

b) How do the pH of the oxides of A and E compare. (1mk)

.....

c) On the grid, indicate with a tick (✓) the position of K which is found on the third period and forms K^{3-} ions. (1mk)

24. The curves below were obtained when equal volumes of nitric (v) acid of same concentration were reacted with 25.0g of calcium carbonate, labelled Y. In one case, the acid was first warmed before the reaction.



a) Which curve represents the reaction involving warm nitric (v) acid? (1mk)

b) Sketch the curves obtained if the graph of the volume of CO_2 produced against time were plotted. (NB: on the same axis) (2mks)

25. i) State two observations made when a small piece of potassium metal is put in a beaker full of water.

(2mks)

.....
.....
.....

ii) Name the group of the periodic table to which potassium belongs.

(1mk)

.....
.....

26. When a hydrocarbon with formula C_xH_y burns in chlorine gas, black specks and a colourless gas are obtained.

a) To which homologous series does the hydrocarbon belong?

(1mk)

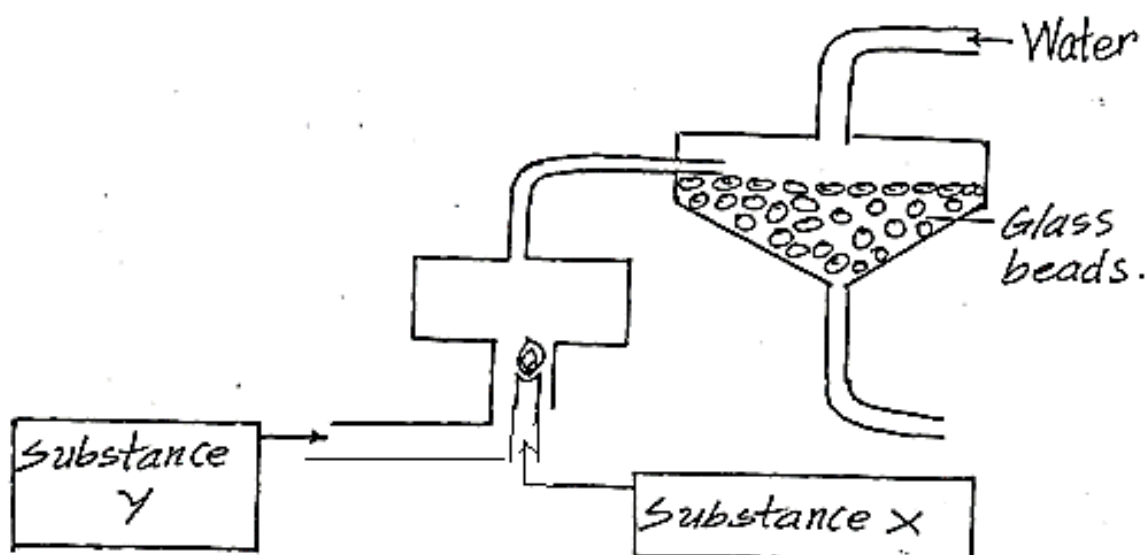
.....
.....

b) Write the general equation for the reaction between the hydrocarbon and chlorine gas.

(1mk)

.....
.....
.....

27. The diagram below represents a set up for large scale manufacture of hydrochloric acid. Study it and answer the questions that follow.



i) Name the substance X. (1mk)

.....
.....

ii) What is the purpose of glass beads? (1mk)

.....
.....

iii) Give one use of hydrochloric acid. (1mk)

.....

28. When 25cm³ of 0.5M HCl is added to 25cm³ of 0.5M NaOH, the temperature of the solution rose from 23⁰C to 26⁰C. Given that the density of the solution is 1g/cm³ and its specific heat capacity is 4.2Jg⁻¹k⁻¹.

a) Determine the amount of heat evolved that caused the temperature to rise. (1mk)

.....
.....
.....

b) Work out the molar enthalpy of neutralization for this reaction. (2mks)

.....
.....
.....

THIS IS THE LAST PRINTED PAGE!

