

# KENYA EDUCATORS CONSULYANCY EXAMS

TISMA 004

## COMPETENCE BASED ASSESMENT

GRADE 3 YEAR

(MONITORING LEARNERS PROGRESS)

### ENVIRONMENTAL ACTIVITIES

TIME: \_\_\_\_\_

NAME: .....

LEARNER UPI:

--	--	--	--	--	--

GENDER:

GIRL

BOY

SCHOOL NAME .....

#### Answer all questions in the spaces

1. Flooding makes people to? \_\_\_\_\_

(migrate, live)

2. We harvest during \_\_\_\_\_

(rainy, dry)

3. When there is no rain animals

4. We should \_\_\_\_\_ water.

(recycle, waste)

5. We should wear

raining? (wet, warm)

6. We should drink a lot of \_\_\_\_\_

7. What has the weather caused in the picture



\_\_\_\_\_

#### provided.

season?

become \_\_\_\_\_. (fat, thin)

\_\_\_\_\_ clothes when it's

during dry season? (tea, water)

below?

8. Where do you get water at home? \_\_\_\_\_ (river, trees)

9. We make water safe for drinking through? \_\_\_\_\_ (boiling, freezing)

10. There are \_\_\_\_\_ types of soil. (two, three, one)

11. \_\_\_\_\_ soil has fine particles

(clay, loam, sand)

12. The smoothness or roughness of soil is known as \_\_\_\_\_ (colour, texture, size) Name

**3 things that plants give us**

13. \_\_\_\_\_

14. \_\_\_\_\_

15. \_\_\_\_\_

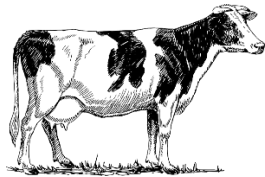
16. We should protect ourselves from dangerous plants by wearing? \_\_\_\_\_

(gloves, blanket)

17. \_\_\_\_\_ is a flowering plant?

(sunflower, pine)

**Name three things that the animal below give us**



18. We should \_\_\_\_\_ ourselves when it is very cold. (warm, run, jump)

19. In the past most people used \_\_\_\_\_ to

cook. (gas, firewood, kerosene)

23. Which one is a source of

heat? \_\_\_\_\_ (air, water, firewood)

24. We use \_\_\_\_\_ to put out fire when

there is fire outbreak.

**(kerosene, oil, fire extinguisher)**

25. \_\_\_\_\_ can cause fire outbreak.

**(clothes, kerosene, water)**

26. \_\_\_\_\_ gives us companion in the house.

**(cow, cat)**

27. Which one is not a safe place? \_\_\_\_\_

**(highway, home, school)**

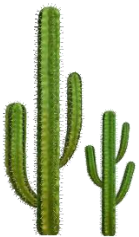
28. We should \_\_\_\_\_ strangers to our parents, guardians or teachers.

**(report, forgive, forget)**

29. We should not leave the tap \_\_\_\_\_ to avoid wasting water. **(running, pouring)**

30. We should not \_\_\_\_\_ under a tree when it's raining. **(shelter, cut)**

31. The type of plant below is called?



\_\_\_\_\_ **(flowering, thorny)**

32. Which soil is best for

farming? \_\_\_\_\_ **(clay, sand, loam)**

33. **On which weather day do we use the object below?**



\_\_\_\_\_ **(windy, rainy)**