

COMMONLY KCPE TESTED QUESTIONS



SCIENCE

200 PREICTION QUESTIONS

Time: 2 Hours 30 Mins



A COMPILATION OF KCPE TOP PREDICTION
QUESTIONS COVERING ALL THE POSSIBLE
KCPE 2023 AREAS BY THE TOP WRITERS OF
KNEC NAIROBI HQ.



FOR MARKING SCHEMES:

CONTACT:

MR MACHUKI - 0724333200

OR

ORDER ONLINE AT:

www.kenyaeducators.co.ke

KENYA EDUCATORS CONSULTANCY

COMMONLY TESTED KCPE QUESTIONS
(200 STRUCTURED KCPE 2023 PREDICTION QUESTIONS)

1. Which blood vessel carries pure blood rich in oxygen from the lungs to the heart?
2. Which of the following pairs of drugs consists only of illegal drugs in Kenya?
 - A. Bhang and mandrax
 - B. Tobacco and tea
 - C. Coffee and alcohol
 - D. Inhalants and miraa
3. Which one of the following minerals works hand in hand with platelets in clotting after an injury?
 - A. Iron
 - B. Calcium
 - C. Phosphorus
 - D. Vitamin D
4. Which one of the following stages of HIV/ AIDS infection does one look healthy with no visible signs but tests positive?
 - A. Incubation
 - B. Window period
 - C. Symptomatic
 - D. Full blown AIDS
5. Which one of the following is **not** a function of the placenta?
 - A. Nourishes the embryo
 - B. Produces hormones that maintain pregnancy
 - C. Facilitates the transfer of wastes
 - D. Lubricates the birth canal during birth
6. Which one of the following sexually transmitted infections has a painless sore on the genitals as one of the signs?
 - A. Syphilis
 - B. Gonorrhoea
 - C. Chancroid
 - D. Genital herpes
7. Which of the following is the main constituent of a balanced diet obtained by animals when they feed on rice husks?
 - A. Carbohydrates
 - B. Proteins
 - C. Vitamins
 - D. Mineral salts
8. Which one of the following is not an example of rotational grazing?
 - A. Strip
 - B. Paddock
 - C. Tethering
 - D. Zero grazing



COMMONLY TESTED KCPE QUESTIONS
(200 STRUCTURED KCPE 2023 PREDICTION QUESTIONS)

9. Which one of the following is the cheapest material for modelling the solar system?

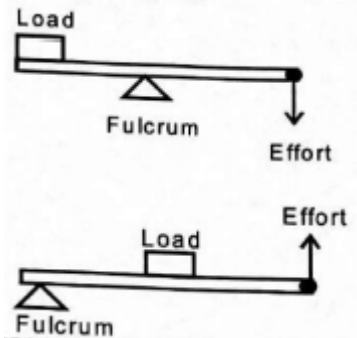
- A. Clay
- B. Softboard
- C. Plasticine
- D. Pins

10. The following are some uses of components of air:

- i. *manufacturing of electric bulbs*
- ii. *supports burning*
- iii. *manufacture of soft drinks*
- iv. *germination of seeds*
- v. *putting out fire*

Which of the uses are for carbondioxide?

11. A certain lever when in use, can work with load, effort and pivot at different positions as shown in the diagrams below.



Which one of the following levers is described by the diagrams shown above?

- A. Wheelbarrow
- B. Spade
- C. Crow bar
- D. Claw hammer

12. Which method of separating mixtures can be used to separate wheat flour from husks?

- A. Picking
- B. Filtering
- C. Sieving
- D. Winnowing

13. In a food chain, which organisms should be the most abundant?



COMMONLY TESTED KCPE QUESTIONS
(200 STRUCTURED KCPE 2023 PREDICTION QUESTIONS)

- A. Producers
 - B. Tertiary consumers
 - C. Primary consumers
 - D. Secondary consumers
14. The transfer of heat through solids and gases respectively is
15. Which one of the following statements is **not** true about the solar system
- A. Mars is the fourth planet from the sun.
 - B. Jupiter is the largest planet.
 - C. We use glue to mount the planets to the orbit
 - D. Venus is the brightest planet
16. Materials which allow some light to pass through them but one cannot see them clearly are called
17. The largest component of the environment on the surface of earth is
18. Which water borne disease can be controlled covering pit latrine after use?
19. Which type of soil erosion can be prevented by mulching?
20. Which one of the following is a natural source of light?
- A. Moon
 - B. Torch
 - C. Electricity
 - D. Firefly
21. A ruler placed slanting in water appears broken. This is because light
22. The diagram below represents a set-up that can be used to demonstrate a certain aspect of heat.
-
- After some time, the wax melted due to;
23. Which one of the following crop pests attacks and destroys crops by drilling holes in stored grains?
- A. White ants
 - B. Weevil
 - C. Stalk borers
 - D. Cutworms
24. Which one of the following plants stores food in the same part of the plant as sugarcane?
- A. Carrot
 - B. sweet potato



COMMONLY TESTED KCPE QUESTIONS
(200 STRUCTURED KCPE 2023 PREDICTION QUESTIONS)

- C. Irish potatoes
D. Cassava
25. A bean seed stores food in the
26. The following are characteristics of certain animals:
- A. *body covered with scales*
 - B. *lay eggs*
 - C. *cold blooded*
 - D. *breath through lungs*
- Which one of the following pairs of animal has all the characteristics listed?
- A. Turtle and shark
 - B. Lizard and tortoise
 - C. Tilapia and frog
 - D. Crocodile
27. Which one of the following is true about friction. Friction can be
- A. Increased by streamlining
 - B. reduced by treading
 - C. used to make work easier
 - D. measured using a spring balance
28. Which one of the following food stuffs constitutes a balanced diet?
- A. Potatoes, beans, eggs
 - B. Chicken, cabbage, beans
 - C. Rice, chapati, beans
 - D. Peas, ugali, spinach
29. Repairing leaking taps specifically helps in
30. Given below are descriptions of a certain stage of HIV infection
- i. It lasts between 6 weeks to 12 years
 - ii. If a medical test is done, the presence of HIV are discovered in the sample of blood.
 - iii. The infected person looks normal and healthy
 - iv. Can infect other people
- Which stage of HIV is described above?
31. Which one of the following is not a way of using water sparingly?
- A. Reusing domestic water for irrigation
 - B. Use of drip irrigation
 - C. Closing taps that are not in use
 - D. Repairing leaking pipes



COMMONLY TESTED KCPE QUESTIONS
(200 STRUCTURED KCPE 2023 PREDICTION QUESTIONS)

32. Which one of the following food stuffs contain mainly fats?

- A. Milk
- B. Beans
- C. Peas.
- D. Bananas.

33. The following are characteristics of certain types of clouds

- i. *white in colour*
- ii. *appear like bundles of cotton*
- iii. *dark grey in colour*
- iv. *mountainous in shape*

Which pair of features are for cumulus clouds?

34. Which one of the following is not an effect of livestock diseases?

- A. Blood in the stool.
- B. Reduced yield.
- C. Low quality products.
- D. Death.

35. Which one of the following activities can be used to demonstrate sheet erosion pouring water?

- A. Different positions on a slanting surface
- B. In channels of soil on slanting surface
- C. On a flat surface soil
- D. On a flat surface using a tin with many holes

36. Which one of the following pairs consists only of materials that are non-magnetic?

- A. Copper and aluminium
- B. Steel and zinc
- C. Silver and steel
- D. Iron and aluminium

37. Which one of the following activities will make a bottle top that was floating to sink in water?

- A. Increasing the amount of water
- B. Raising the container with water
- C. Changing the water into another container



COMMONLY TESTED KCPE QUESTIONS
(200 STRUCTURED KCPE 2023 PREDICTION QUESTIONS)

- D. Crushing the bottle top
38. Which one of the following ways of improving soil fertility will take the longest time for plants to get nutrients using?
- A. Compost manure
 - B. Compound fertilizer
 - C. Farmyard manure
 - D. Green manure
39. Which type of soil easily drains water?
40. Which one of the following is not a practice for maintaining simple tools?
- A. Oiling
 - B. Using for the right purpose
 - C. Sharpening
 - D. Storing in a safe place
41. Newton is a unit for measuring?
42. Which one of the following consists only of sexually transmitted infections?
- A. Bilharzia and cholera
 - B. Anaemia and malaria
 - C. Syphilis and typhoid
 - D. Gonorrhoea and syphilis
43. Which one of the following is not a feature of plants that grow in wet areas?
- A. Feathery roots
 - B. Floating flowers
 - C. Deep roots
 - D. Air sacs
44. Which one of the following is not a characteristic of carnivores?
- A. Well spaced teeth
 - B. Long and sharp canines
 - C. Presence of carnassial teeth
 - D. Presence of a diastema
45. Corrugated iron sheets can be damaged when they come into contact with
46. Which one of the following is a modern method of food preservation?



COMMONLY TESTED KCPE QUESTIONS
(200 STRUCTURED KCPE 2023 PREDICTION QUESTIONS)

- A. Salting
- B. Smoking
- C. Use of honey
- D. Canning

47. Which one of the following groups consists of only cash crops?

- A. Maize, tea, yams
- B. Coffee, tea, cocoa
- C. Banana, orange, carrot
- D. Coconut, maize, beans

48. The purpose of using rollers to move a load is to

49. The following are activities followed when making a simple beam balance but not in the correct order

- i. fix the stand to the base
- ii. suspend the arm to find the balancing point
- iii. make the arm, stand and base
- iv. suspend the tins using strings
- v. fix the arm to the stand

Which one of the following is the correct order of activities?

- A. (iii), (ii), (i), (v), (iv)
- B. (iii), (ii), (v), (iv), (i)
- C. (iii), (ii), (i), (iv), (v)

50. Which one of the following is not a source of electricity?

- A. Dynamol
- B. Dry cells.
- C. Solar panel
- D. Torch

51. All drugs below are NARCOTICS except

- A. khat
- B. bhang
- C. cocaine
- D. heroin

52. Which one of the blood component below helps to stop bleeding after an injury?

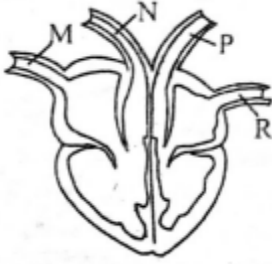
- A. Red blood cells.
- B. Platelets.
- C. Plasma.



COMMONLY TESTED KCPE QUESTIONS
(200 STRUCTURED KCPE 2023 PREDICTION QUESTIONS)

D. White blood cells.

53. The diagram below shows a mammalian heart.



Which blood vessel above carries oxygenated blood to the heart?

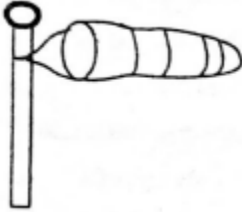
54. The male sex cells in a human being are produced in the _____

55. Which pair of small animals below belong to the same group as a spider?

- A. Tick and tsetse fly.
- B. Mite and crab.
- C. Ants and termites.
- D. Scorpion and mite.

56. Excessive taking of alcohol causes a disease of the liver called:

57. The diagram below shows a weather instrument.



Which statement is not correct about the above instrument?

- A. Its narrow end points where the wind blowing to.
- B. It measures the strength and direction of wind.
- C. It has black and white stripes.
- D. It can be made with pole, wire and a mosquito net.

58. Which component of environment is found in all other components?

59. The addictive element in cigarette is called:

60. Digestion of cooked beans starts in the:

61. Which statement below is **true** about immunization of the infants?

- A. DPT protects the child against diphtheria polio and tetanus
- B. BCG is given at the age of birth and 9 months
- C. Anti-measles is given through injection
- D. Anti-polio is administered through an injection

62. Which one of the following is **not** a social effect of drugs?

- A. Accidents.
- B. Truancy.
- C. Conflicts.
- D. Impaired judgement.

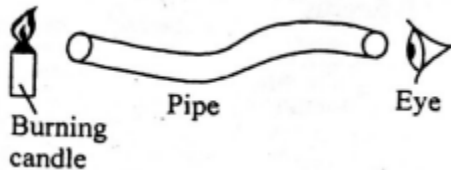


COMMONLY TESTED KCPE QUESTIONS
(200 STRUCTURED KCPE 2023 PREDICTION QUESTIONS)

63. All the following are common communi- cable diseases which one is **not**?
- A. Tuberculosis
 - B. Tetanus
 - C. Malaria
 - D. Typhoid

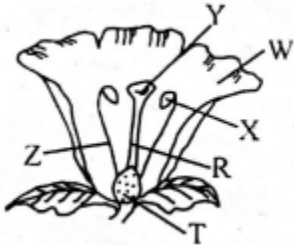
64. Which one of the following is **not** an importance of HIV-testing? To
- A. Decide on marriage.
 - B. Change behaviour.
 - C. Campaign for HIV/AIDS spread.
 - D. Plan for the dependant.

65. Std 6 pupils did the experiment below to investigate a certain property of light.



The property of light investigated is:

66. The diagram below shows a flower



Which part above represents parts of a stamen?

67. Which one of the food crops below represents cereals only?
- A. Oats, maize, peas
 - B. Groundnuts, grams, peas
 - C. Ovacado, sugarcane, maize
 - D. Millets, sorghum, barley
68. Beans seeds can germinate without, _____
69. Which drug is stimulant when abused in small amount and depresant when abused in large amount?
70. The following are signs and symptoms of a certain water borne disease
- i. fever
 - ii. abdominal pains



COMMONLY TESTED KCPE QUESTIONS
(200 STRUCTURED KCPE 2023 PREDICTION QUESTIONS)

- iii. skin rashes
- iv. joint and muscle aches

The above diseases is **likely** to be:

71. Which is the 4th and 6th planet in the solar system from the sun?
A. Earth and Jupiter
B. Mars and Jupiter
C. Mars and Saturn
D. Jupiter and Uranus
72. Which of the following pair of methods of food preservation makes both modern and traditional methods of food preservation
- a. Drying and freezing
 - b. Low temperature and drying
 - c. Smoking and drying
 - d. Salting and smoking
73. Which one of the following is not a function of leaves of a green plant?
- A. Breathing
 - B. Transpiration
 - C. Absorption
 - D. Photosynthesis
74. Which one of the following is **not** a myth and misconception about HIV/AIDS?
- A. AIDS victims are always thin
 - B. Sex with a virgin cures AIDS
 - C. AIDS is a curse from God
 - D. AIDS has no cure
75. The type of soil erosion that can be prevented by building porous dams is the
76. Which property of soil determines the rate of drainage in soil?
77. Which lever below has the effort between load and fulcrum?
- A. Fishing rod
 - B. Wheelbarrow
 - C. Claw hammer
 - D. Bottle opener
78. Which one of the following is **not** a function of all leaves in green plants?
- A. Making food
 - B. Losing excess water
 - C. Exchange of gases
 - D. Food storage
79. After fertilization in a female the implan- tation takes place in the:



COMMONLY TESTED KCPE QUESTIONS
(200 STRUCTURED KCPE 2023 PREDICTION QUESTIONS)

80. Which stage of HIV infection does the patient test negative but can infect others?

81. The type of teeth used for tearing off meat also:

- A. have rough tops
- B. are sharp pointed
- C. have two roots
- D. are chisel-shaped

82. A brightly coloured flower

- A. has feathery stigma
- B. produces light pollen grains
- C. are small in size
- D. has few heavy pollen grains

83. A mixture of salt and sand can be separated by

84. The force that resists motion is measured in

85. Which one of the following shows correctly the excretory organ and the wastes excreted

Organ wastes

- A. Skin water,urea,carbondioxide
- B. Kidney water, salt,carbondioxide
- C. Lungs carbon dioxide,water,salt
- D. Kidneys water,urea,salt

86. Which one of the following is not a use of water in the industries?

- A. Making fountains.
- B. Cleaning coffee berries.
- C. Cooling machines.
- D. Irrigation.

87. Which one of the following is correct about bat, frog and snake?

- A. They have scales
- B. They lay eggs
- C. Have varying body temperature
- D. Breath through lungs.

88. Boat racing is a use of water in

89. Which one of the following is **not true** about the concentrates as animal feeds?

- A. Contains high nutrient contents
- B. Have high moisture content
- C. Supplement other feeds

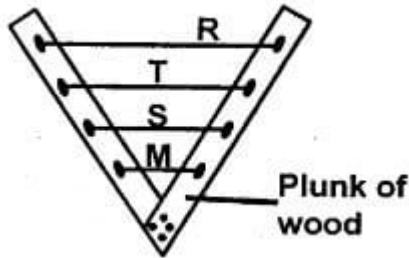


COMMONLY TESTED KCPE QUESTIONS
(200 STRUCTURED KCPE 2023 PREDICTION QUESTIONS)

- D. Are generally bought from shops
90. The following are uses of heat **except**
- A. ironing
 - B. cooking
 - C. keeping pests away
 - D. drying
91. Which one of the following is the BEST method of controlling weeds in a nursery bed
- A. Digging out
 - B. Using chemicals
 - C. Uprooting
 - D. Slashing
92. Which group of material below does not allow the light to pass through?
- A. Mirror, tinted glass, milk
 - B. Air, dirty water, stone
 - C. Skylight, oiled paper, frosted glass
 - D. Mirror, milk, dirty water.
93. Which type of weed has very strong smell and can be used as a pesticide?
94. In a human breathing system when the diaphragm flattens:
95. Which of the following physical changes in adolescence takes place in boys only?
- A. Increase in weight and height
 - B. wet dreams
 - C. produce sex cells
 - D. hips broaden
96. Which group of plants below are green non-flowering plants only?
- A. Pine, sugarcane, cactus
 - B. Yeast, mould, mushrooms
 - C. Cider, algae, ferns
 - D. Banana, sugarcane, grass
97. Wires of the same material and thickness but of different lengths labelled R, T, S and M were fixed on a wooden plank as shown below.



COMMONLY TESTED KCPE QUESTIONS
(200 STRUCTURED KCPE 2023 PREDICTION QUESTIONS)



Which wire produced the highest sound when plucked?

98. What is the **main** use of fibre in the diet
99. When soil is strongly burnt in a tin to produce smoke, it shows that soil
100. Which two forms of energy requires a medium to be transferred from one point to the other?
101. Which one of the following is **not** a necessary condition for seeds to germinate?
- A. Moisture.
 - B. Soil.
 - C. Air.
 - D. Warmth.
102. The pests that burrow in the maize plant while it is growing are
103. Which one of the following is the **best** method for Lucy to use to control weeds on a very small piece of land with vegetables?
- A. Using herbicides.
 - B. Uprooting.
 - C. Digging out.
 - D. Burning them.
104. The loudness or softness of sound is its
105. When light moves from one medium to another, it
- A. bounces.
 - B. bends.
 - C. splits.
 - D. is absorbed.
106. The materials which allow some light to pass through
- A. improve privacy.
 - B. enable one to see clearly.
 - C. are said to be transparent.
 - D. are used to make car windscreens.
107. In order to increase the rate at which a substance dissolves in a solvent, one shouldn't
108. Which statement below does not describe cumulus clouds? They
- A. are dark grey in colour.
 - B. are white and cotton like.
 - C. form high in the sky.
 - D. have a flat base.



COMMONLY TESTED KCPE QUESTIONS
(200 STRUCTURED KCPE 2023 PREDICTION QUESTIONS)

109. Which substance below has a definite mass but no definite shape?
- A. Flour.
 - B. Stone.
 - C. Office glue.
 - D. Steam.

110. The diagram below shows the composition of air.



The part which makes bulbs glow without blowing is labelled

111. The vaccines given to a baby at birth prevents them against
112. Which one of the following is **not** a **reason** for preserving food? To
- A. avoid wastage of the food.
 - B. sell the food when prices are favourable.
 - C. consume the food when nutrients are plenty.
 - D. keep the food for future use.
113. Which one of the following human intestinal worms can one get by eating raw meat?
- A. Hookworms.
 - B. Pinworms.
 - C. Roundworms.
 - D. Tapeworms.
114. Which one of the following methods of preserving food is modern?
- A. Smoking.
 - B. Using honey.
 - C. Canning.
 - D. Drying.
115. Which of the following sets of foodstuffs is suitable for a child suffering from marasmus?
- A. Apples, eggs, oranges, meat.
 - B. Beans, kales, mangoes, sweet potatoes.
 - C. Rice, bananas, maize, cabbage.
 - D. Sausages, potatoes, chicken, cooked bananas.
116. Which one of the following is not an effect of heat on matter?
- A. Expansion.
 - B. Melting.
 - C. Condensation.
 - D. Evaporation.
117. The following are activities that take place during breathing:

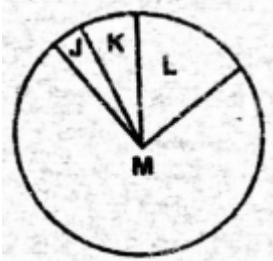


COMMONLY TESTED KCPE QUESTIONS
(200 STRUCTURED KCPE 2023 PREDICTION QUESTIONS)

- i. *Volume of the chest cavity decreases.*
- ii. *Ribs move upwards and outwards.*
- iii. *Lungs shrink.*
- iv. *The diaphragm muscles relax.*

Which of the activities take place during breathing out?

118. The diagram below shows the approximate percentages of the gases that make up air.



Which one of the following processes does not require the part labelled L?

- A. Combustion.
 - B. Germination.
 - C. Making plant food.
 - D. Respiration.
119. When the arrow head of a windvane points to the south, it shows that wind is the blowing from
120. Which one of the following levers has the position of the load between the effort and the fulcrum when in use?
- A. Wheelbarrow.
 - B. Claw hammer.
 - C. Spade.
 - D. Crowbar.
121. Which one of the following statements is **not** correct about liquids?
- A. Some liquids expand when frozen.
 - B. Liquids contract when heated.
 - C. Liquids expand when heated.
 - D. Liquids expand more than solids when heated.
122. Which one of the following is **not** a way or reducing the force that opposes motion?
- E. Making treads.
 - F. Using rollers.
 - G. Streamlining.
 - H. Using grease and lubricating oil.



COMMONLY TESTED KCPE QUESTIONS
(200 STRUCTURED KCPE 2023 PREDICTION QUESTIONS)

123. Which of the pairs below shows major non-living components of the environment?
- A. Light and sound.
 - B. Animals and plants.
 - C. Air and water.
 - D. Soil and heat.
124. Which one of the following is **not** a source of electric current?
- A. Car battery.
 - B. Generator.
 - C. Water fall.
 - D. Wind turbines.
125. Weeds should be
126. Which of the following animals are kept **mainly** for mutton production?
- A. Sheep and pigs.
 - B. Goats and sheep.
 - C. Cattle and camels.
 - D. Goats and camels.
127. Which one of the following is **not** a method of rotational grazing?
- A. Zero grazing.
 - B. Tethering.
 - C. Paddocking
 - D. Strip grazing.
128. The **most** appropriate method of controlling the type of erosion commonly experienced along the roofs is
129. Which small animals below is not classified in the same group as spider?
- A. Mite
 - B. Scorpion
 - C. Tick
 - D. Crab
130. Which one of the following is the function of fibre in the diet? Fibre
- A. helps in digestion of food.
 - B. adds more nutrients to the body.
 - C. helps in the removal of undigested food.
 - D. helps in absorption of digested food.



COMMONLY TESTED KCPE QUESTIONS
(200 STRUCTURED KCPE 2023 PREDICTION QUESTIONS)

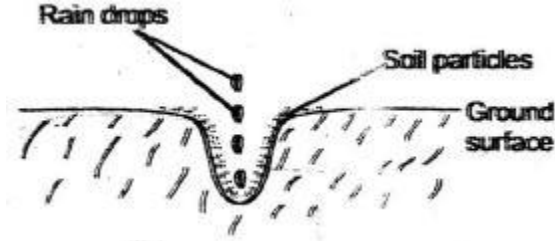
131. Which one of the following is **not** likely to increase the pressure of a liquid in a container?
- A. Increasing the amount of liquid.
 - B. Reducing the diameter of the container.
 - C. Using a narrow container.
 - D. Raising the container.
132. Which one of the following plants does **not** manufacture its own food?
- A. Moulds.
 - B. Fern.
 - C. Grass.
 - D. Cactus.
133. The following are the processes of germination of a seed but not in order:
- i. Emergence of the plumule.
 - ii. Absorption of water and air.
 - iii. Bursting of the testa.
 - iv. Emergence of the radicle.
- Which one of the following is the correct order?
134. Which one of the following pairs of diseases can be controlled through draining away stagnant water?
- A. Bilharzia and malaria.
 - B. Bilharzia and typhoid.
 - C. Cholera and typhoid.
 - D. Cholera and malaria.
135. Which one of the following is a way of controlling the spread of HIV/AIDS among the youth?
- A. Using condoms.
 - B. Abstinence.
 - C. Sticking to one faithful uninfected partner.
 - D. Creating awareness.
136. In which of the following is the force of friction **least** needed?
- A. Closing the door.
 - B. Walking downhill.
 - C. Writing on the chalkboard.
 - D. Stopping a speeding motor cycle.
137. Which one of the following groups has animals with similar characteristics?
- A. Beetle, scorpion, ant.
 - B. Mite, wasp, spider.



COMMONLY TESTED KCPE QUESTIONS
(200 STRUCTURED KCPE 2023 PREDICTION QUESTIONS)

- C. Termite, tick, grasshopper
- D. Wasp, ant, housefly

138. Which one of the following methods of soil conservation can be used effectively to control the type of soil erosion shown below?



- A. Mulching
 - B. Contour farming
 - C. Terracing
 - D. over cropping
139. Which of the following prevents a baby from shock and bumps?
- A. Umbilical cord.
 - B. Placenta.
 - C. Amniotic sac.
 - D. Amniotic fluid.
140. Which of the following components is found in all environments?
- A. Water.
 - B. Air.
 - C. Heat.
 - D. Plants.
141. Which one of the following does not lead to air pollution?
- A. Smoking bhang in public.
 - B. Spraying farm chemicals and aerosols.
 - C. Vehicle exhaust fumes.
 - D. Use of excessive fertilizers.
142. Which of the following statements is **not** correct about separation of mixtures?
- A. Picking is used to separate big solid particles.
 - B. Winnowing is suitable for separating a mixture of light and heavy solid particles.
 - C. Sieving separates a mixture of small and large solid particles.
 - D. A mixture of magnetic materials can be separated using a magnet.



COMMONLY TESTED KCPE QUESTIONS
(200 STRUCTURED KCPE 2023 PREDICTION QUESTIONS)

143. Which one of the following is an effect of excessive use of fertilizer as a water pollutant?
- A. Excessive growth of water weeds
 - B. Water-borne diseases
 - C. Suffocation of water animals
 - D. Increase of water animals
144. Which one of the following mammals does **not** give birth to a live young one?
- A. Whale.
 - B. Bat.
 - C. Platypus.
 - D. Nile perch.
145. Repairing leaking taps specifically helps in
- A. re-using water well
 - B. harvesting rain water
 - C. using water sparingly
146. A metallic nail sinks in water while a metallic ship floats on water. This is due to the difference in
147. Which one of the following is not a source of electricity?
- A. Dynamol
 - B. Dry cells.
 - C. Solar panel
 - D. Torch
148. Which statement about vertebrates is **correct**?
- A. Fish and amphibians are warm blooded.
 - B. Mammals and birds give birth to live young ones.
 - C. Reptiles and birds have internal fertilization.
 - D. Fish and birds have external fertilization.

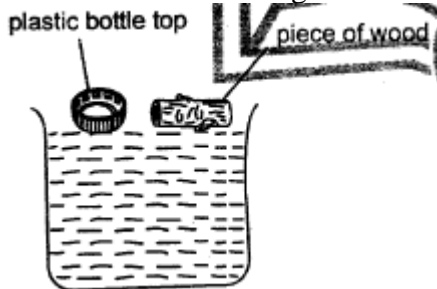


COMMONLY TESTED KCPE QUESTIONS
(200 STRUCTURED KCPE 2023 PREDICTION QUESTIONS)

149. Which pair of blood vessels is **correctly** matched with the nature of blood in it?

	Deoxygenated	Oxygenated
A.	Aorta	venacava
B.	Venacava	pulmonary artery
C.	Pulmonary artery	aorta
D.	Pulmonary vein	aorta

150. During a science lesson pupils setup the experiment as shown below to investigate factor that affect sinking and floating.



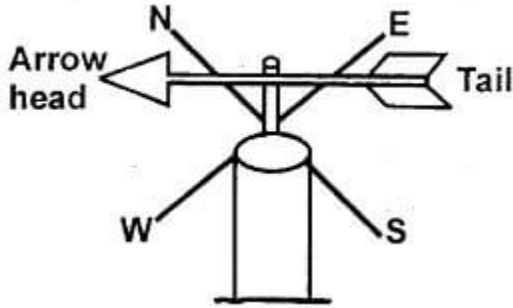
Both material floated because of their

151. When breathing in;
152. An empty metallic ship floats on water because of
153. The blood vessels that carries blood from the lungs to the heart and from the heart to the body respectively are
154. In the female reproductive system, a zygote is formed in the
155. Which one of the following vaccines is administered at birth?
- A. BCG
 - B. Anti-measles
 - C. DPT
 - D. Anti-malaria
156. Which one of the following animals does not breast feed its young ones?
- A. Whale
 - B. Bat
 - C. Shark
 - D. Seal



COMMONLY TESTED KCPE QUESTIONS
(200 STRUCTURED KCPE 2023 PREDICTION QUESTIONS)

157. The windvane below was made by pupils using materials found in their school.

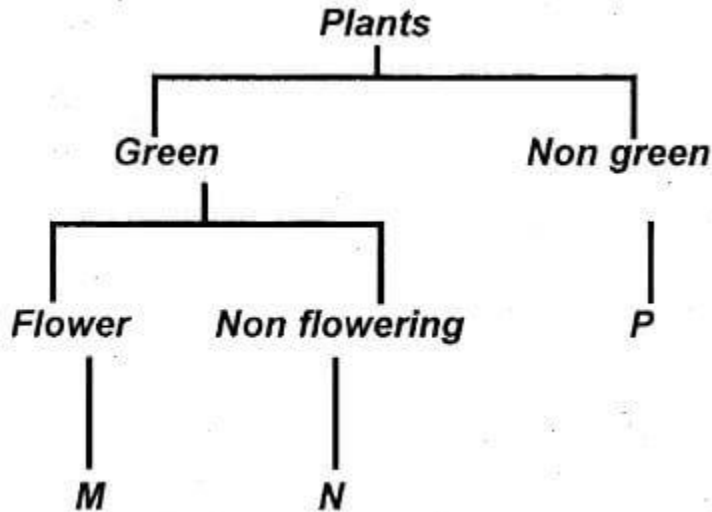


- Which one of the following statements is incorrect about the instrument above?
- A. It shows the wind direction.
 - B. The arrow head should be small than the tail.
 - C. It should be place away from buildings.
 - D. Its arrowhead points the direction where the wind is blowing to.
158. Which one of the following livestock parasites attacks the livestock without living on it?
- A. Tick
 - B. Tsetse fly
 - C. Flea
 - D. Mite
159. Which type of teeth below is incorrectly matched with its function?
- A. Canine - cutting
 - B. Incisors - biting
 - C. Premolar - chewing
 - D. Molar - grinding
160. What is cross pollination?
161. Which one of the following explains the function of white blood cells?
- A. Combine with oxygen.
 - B. Fight the disease causing germs.
 - C. Carry digested food materials.
 - D. Clothing the blood.
162. Which animals provides mutton and dairy?
163. Children born to a smoking mother during pregnancy are least likely to be
164. Which one of the process following takes place immediately after sperms cell and ovum unite?
- A. Fertilization
 - B. Ovulation
 - C. Implantation
 - D. Menstruation



**COMMONLY TESTED KCPE QUESTIONS
(200 STRUCTURED KCPE 2023 PREDICTION QUESTIONS)**

165. The chart below shows the classification of plants.



Which one of the following correctly shows the plant represented by letters M, N, and P?

	M	N	P
A	Maize	Ferns	Cypress
B	Lichen	Algae	Mushroom
C	Beans	Cactus	Puff balls
D	Acacia	Cedar	Toadstool

166. Which one of the following shows major non-living components of environment?

- A. Animals, plants.
- B. Sound, light, heat.
- C. Soil, stones, plants.
- D. Soil, air, water.

167. The most effective method of controlling the spread of HIV/AIDS among the youth is by

168. Miraa, tobacco and alcohol have one thing in common which one is it? They are

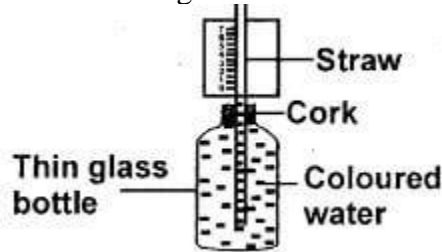
169. Which one of the following does not show how plants and animals depend on each other?

- A. Animals getting shade
- B. Birds sheltering on trees.
- C. Pollination.
- D. Animals getting carbon dioxide from green plants.



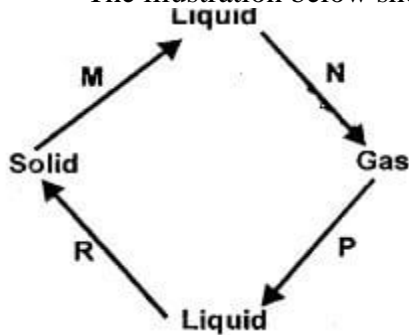
COMMONLY TESTED KCPE QUESTIONS
(200 STRUCTURED KCPE 2023 PREDICTION QUESTIONS)

170. The diagram below shows an improvised simple liquid thermometer.



Which one of the following would make it measure slight changes in temperature?

- A. Tightening the cork.
 - B. Making the straw and small narrower.
 - C. Raising the temperature.
 - D. Adding more coloured water.
171. In a food chain, cabbages can be classified under
172. When carrying out an experiment on drainage in soil, what does not need to be the same?
173. The illustration below shows the changes of states in matter.



Liquid Which two processes require an increase in temperature?

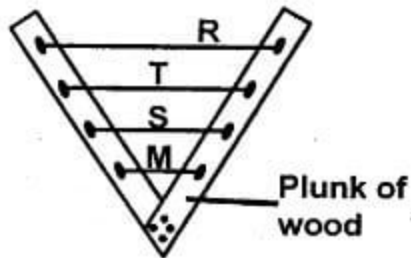
174. Heat from the sun reaches the leaves of the plants through a process called
175. Below are characteristics of matter,
- i. Definite shape.
 - ii. Definite size.
 - iii. Definite mass.

Which one of the above best describe paraffin?

176. The second and seventh planets in the solar system respectively are:
177. Wires of the same material and thickness but of different lengths labelled R, T, S and M were fixed on a wooden plunk as shown below.



COMMONLY TESTED KCPE QUESTIONS
(200 STRUCTURED KCPE 2023 PREDICTION QUESTIONS)



- Which wire produced the highest sound when plucked?
178. Which one of the following is not a function of leaves of a green plant?
- A. Breathing
 - B. Transpiration
 - C. Absorption
 - D. Photosynthesis
179. Which one of the following is not a cereal crop?
- A. Maize
 - B. Oats
 - C. Beans
 - D. Sorghum
180. Which crop pest below is not correctly matched with the part of the plant it attacks?
- A. Aphids - All kinds of grains
 - B. Weaver birds - Grains of cereals
 - C. Stalk borers - Inside of the stems
 - D. Cut worms - Stem of young plants.
181. Weeds should be
182. Which parts of a flower makes the male parts?
183. Which one of the following weeds has thorns and green fruits which turn yellow when ripe?
- A. Oxalis
 - B. Sódom apple



COMMONLY TESTED KCPE QUESTIONS
(200 STRUCTURED KCPE 2023 PREDICTION QUESTIONS)

- C.Wondering jew
- D.Black jack
184. Which one of the following is not an effect of livestock diseases?
- A.Blood in the stool.
- B.Reduced yield.
- C.Low quality products.
- D.Death.
185. Which small animals below is not classified in the same group as spider?
- A.Mite
- B.Scorpion
- C.Tick
- D.Crab
186. Which one of the following is not a use of water in the industries?
- A.Making fountains.
- B. Cleaning coffee berries.
- C.Cooling machines.
- D.Irrigation.
187. When fertilizer is used excessively to improve the quality of the soil, it may lead to
188. Sheet erosion can be controlled by
189. What is the importance of adding manure when preparing compost manure?
190. Which one of the following methods of food preservation dehydrates food?
- A.Canning
- B.Freezing



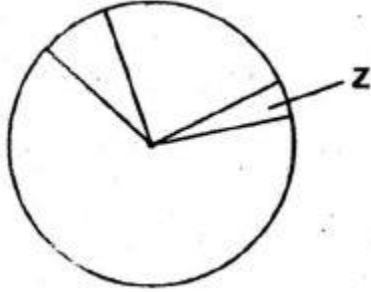
COMMONLY TESTED KCPE QUESTIONS
(200 STRUCTURED KCPE 2023 PREDICTION QUESTIONS)

- C. Use of low temperature
- D. Drying.
191. Which one of the following is the BEST method of controlling weeds in a nursery bed
- A. Digging out
- B. Using chemicals
- C. Uprooting
- D. Slashing
192. During a class experiment, pupils mixed all the liquids below in one glass bottle.
- E. Water
- F. Milk
- G. Kerosene
- H. Cooking oil
- How many layers were formed after mixing?
193. Which one of the following is the most effective methods of separating a mixture of insoluble solid from liquid?
- A. Filtering
- B. Winnowing
- C. Sieving
- D. Decantation



COMMONLY TESTED KCPE QUESTIONS
(200 STRUCTURED KCPE 2023 PREDICTION QUESTIONS)

194. Below is a pie chart that shows different air components in their relative amounts

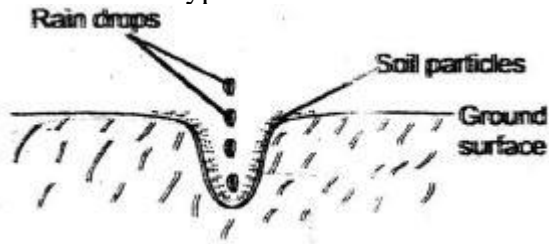


Which one of the following is NOT function of the part of the air labelled Z on the pie chart?

- A.Supporting burning
 - B.Good for photosynthesis
 - C.Preserves soft drinks
 - D.Making fire extinguishers
195. The soil that holds the least amount of water
- A.has the highest capillarity
 - B.makes the longest ribbons
 - C.has the largest air spaces
 - D.is sticky when wet.

196. The force that opposes movement is measured using

197. Which one of the following methods of soil conservation can be used effectively to control the type of soil erosion shown below?



- A.Mulching



COMMONLY TESTED KCPE QUESTIONS
(200 STRUCTURED KCPE 2023 PREDICTION QUESTIONS)

B. Contour farming

C. Terracing

D. Cover cropping

198. Which one of the following is not a source of electricity?

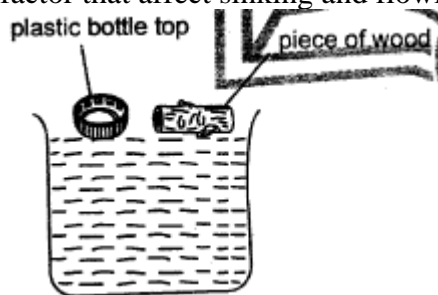
A. Dynamol

B. Dry cells.

C. Solar panel

D. Torch

199. During a science lesson pupils setup the experiment as shown below to investigate factor that affect sinking and floating.



Both material floated because of their

200. What is convection?

